

GOODSPEED MUSICALS

2009 SEASON

Camelot

A Legendary Musical



A unique relationship with every client.

That's where we come in.

Trust Company of Connecticut is pleased to help individuals, families and nonprofit organizations grow and protect their wealth.

Combining the intimacy of a local trust company and the resources of a well-established regional bank, our services are built upon the core belief that close personal attention will lead to lasting relationships.

To arrange a confidential meeting, please contact one of our trusted financial professionals.

Hartford

Dave Freese
860.293.4140

New Haven

Clay Dean
203.789.2779

Westport

Jim Donaldson
203.227.7338

West Springfield

Bob Gibowicz
413.747.1482



TRUST COMPANY OF CONNECTICUT
A Division of NewAlliance Bank

Investment Management • Trust Administration • Estate Administration

www.trustcompanyct.com



Before



Actual patient photographs



Before



Extreme Makeover Results!

Smile Reconstruction
 Filling Replacement
 Reshaping/Resizing
 Porcelain Veneers
 Dental Implants
 Restorations
 Composite Bonding
 Whitening
 Bite Adjustment
Free Consultation

717 Newfield Street
 Middletown, CT

Conveniently located on Route 3,
 just minutes off Route 9...
 see directions on our website!

A sparkling, healthier smile really can be yours!
Painlessly—and in less time than you may have
 imagined possible.

At *Advanced Cosmetic Dentistry*, superior dental
 procedures are combined with gentle, spa-like care
 for stunning results once only available to the
 Hollywood elite.

Your initial consultation is free—and will prove we
 can make a difference that will have you smiling.

To view more patient photos visit our website:

www.DrPeterNelson.com

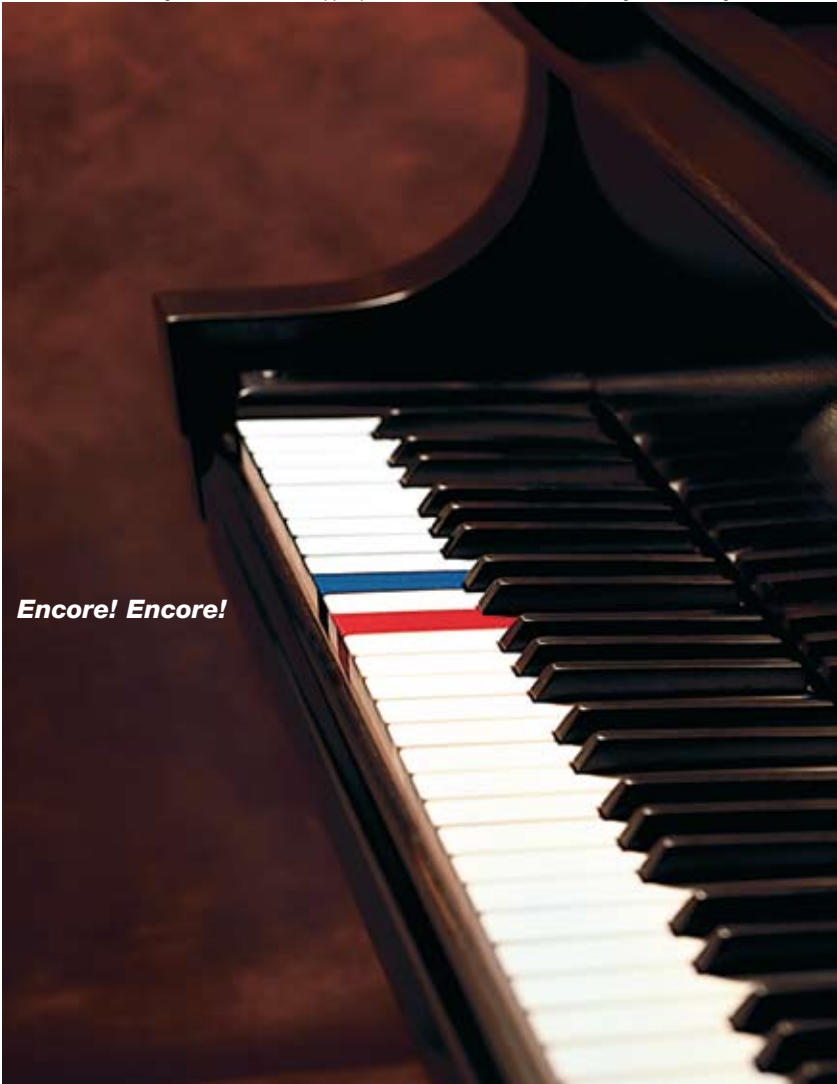
To schedule your free consultation, call:

860-347-1227



Advanced
**COSMETIC
 DENTISTRY**

The difference will have you smiling!



Encore! Encore!

We know the power of a moving performance. That's why American Airlines proudly supports the arts in communities around the world. After all, we offer world-class performances to more than 250 cities in 40 countries around the globe. Book your next trip online at AA.com or call us at 1-800-433-7300.



We know why you fly **American Airlines**
AA.com





GOODSPEED MUSICALS®

what's inside

- Camelot | 5**
- Cast of Characters | 6**
- Musical Numbers | 7**
- Who's Who | 8**
- About the Authors | 14**
- Past Productions | 14**
- Program Notes | 31**
- History of the Goodspeed Opera House | 32**
- About Goodspeed Musicals | 33**
- William Goodspeed Legacy Society | 34**
- The Goodspeed Opera House Foundation | 35**
- Goodspeed Membership | 36**
- Goodspeed Musicals Staff | 41**
- For Your Information | 42**

Audio and video recording and photography are prohibited in the theatre.

Please turn off your cell phone, beeper, watch alarm or anything else that might make a distracting noise during the performance. Unwrap any candles, cough drops or mints before the performance begins to avoid disturbing your fellow audience members or the actors on stage. We appreciate your cooperation.

Editors: Briana M. Bridgewater, Lori A. Cartwright

ADVERTISING

OnStage Publications

937-424-0529 | 866-503-1966

e-mail: korlowski@jusbiz.com

www.jusbiz.com

The Goodspeed Musicals program is published in association with OnStage Publications, 1612 Prosser Avenue, Kettering, OH 45409.

The Goodspeed Musicals program may not be reproduced in whole or in part without written permission from the publisher.

JBI Publishing is a division of OnStage Publications, Inc. Contents © 2009.

All rights reserved. Printed in the U.S.A.



GOODSPEED MUSICALS®

*Gratefully Acknowledges the Following
Supporters for 2009*

CORPORATE SUPPORT

American Airlines
Bank of America
Blum Shapiro
COMCAST
Connecticut Light & Power Company
DeWitt Stern Group, Inc.
Dominion Resources Services, Inc.
Essex Savings Bank
GKN Aerospace Services Structures Corp.
Hoffman Audi
The Inn at Middletown
Liberty Bank
Mohegan Sun
National Alliance for Musical Theatre
NewAlliance Bank
Robinson & Cole LLP
The Suzio York Hill Companies
Updike, Kelly & Spellacy, P.C.
Webster Bank
WSHU Public Radio Group
WTNH News Channel 8

FOUNDATION SUPPORT

Anonymous (1)
Acorn Alcinda Foundation, Inc.
The Adolph and Ruth Schnurmacher Foundation, Inc.
The Aeroflex Foundation
Aldo DeDominicis Foundation
The ASCAP Foundation - Irving Caesar Trust
The Christine E. Moser Foundation
Daphne Seybolt Culpeper Memorial Foundation
The Max Showalter Foundation
Maximilian E. and Marion O. Hoffman Foundation
New Alliance Foundation
The Noel Coward Foundation
The Rodgers and Hammerstein Foundation
The Samuel and Rebecca Kardon Foundation
SBM Charitable Foundation, Inc.
The Shubert Foundation, Inc.

GOVERNMENT SUPPORT

With Support from the
Connecticut Commission
on Culture & Tourism
National Endowment for the Arts

CONNECTICUT
1-888-CTVisit / CTVisit.com



SPECIAL THANKS TO

Duncan Edwards of Audio Design International,
a division of ADI Group
Bella Rosa International, Inc.
Cross Island Ferry Services, Inc.
HarperCollins Publishers
HMS Media, Inc.
Leros Point to Point, Inc.
The Penguin Group
The Piano & Organ Warehouse

Coming Next

A Funny

THING HAPPENED
ON THE WAY TO THE

FORUM

AMERICA'S Funniest MUSICAL



Sept 25-Nov 29

AA American
Airlines[®]
Official Airline of Goodspeed Musicals

Bank of America


 Connecticut
Light & Power



presents

Camelot

Book and Lyrics by **ALAN JAY LERNER**

Music by **FREDERICK LOEWE**

with

**BRANDON ANDRUS RONN CARROLL CHARLES EVERETT CROCCO ERIN DAVIE MAXIME de TOLEDO
BRADLEY DEAN MICHAEL DELEGET MATT FAUCHER STEVE FRENCH ANDREW HUBACHER
MARISSA MCGOWAN RACHEL ALEXA NORMAN SHAWN PENNINGTON HERMAN PETRAS
REBECCA PITCHER RACHEL RINCIONE AMANDA SALVATORE ADAM SHONKWILER
ALLAN SNYDER BEN SWIMMER MATTHEW C. THOMPSON MOLLIE VOGT-WELCH**

Scenery Design by
MICHAEL SCHWEIKARDT

Costume Design by
ALEJO VIETTI

Lighting Design by
JOHN LASITER

Sound by
JAY HILTON

Hair & Wig Design by
CHARLES LaPOINTE

Orchestrations by
DAN DeLANGE

Assistant Music Director
F. WADE RUSSO

Production Manager
R. GLEN GRUSMARK

Production Stage Manager
BRADLEY G. SPACHMAN

Casting by
**STUART HOWARD, AMY SCHECTER,
& PAUL HARDT, CSA**

Associate Producer
BOB ALWINE

Line Producer
DONNA LYNN COOPER HILTON

Music Director
MICHAEL O'FLAHERTY

Choreographed by
RALPH PERKINS

Directed by
ROB RUGGIERO

Produced for Goodspeed Musicals by
MICHAEL P. PRICE

First Performance: July 10, 2009

Goodspeed Musicals is dedicated to the heritage of the musical and the development of new works to add to the repertoire.

Marquee Sponsors: LUCILLE AND DAVE VIOLA, SR.

Sponsored by:



Cast of Characters

(In order of appearance)

Arthur	BRADLEY DEAN
Sir Dinadan	ALLAN SNYDER
Merlyn	HERMAN PETRAS
Guenevere	ERIN DAVIE
Nimue	REBECCA PITCHER
Lancelot	MAXIME de TOLEDO
Squire Dap	MATT FAUCHER
Pellinore	RONN CARROLL
Lady Anne	MARISSA MCGOWAN
Sir Sagramore	STEVE FRENCH
Sir Lionel	BRANDON ANDRUS
Mordred	ADAM SHONKWILER
Sir Clarius	MICHAEL DELEGET
Sir Angus	MATTHEW C. THOMPSON
Tom of Warwick	CHARLES EVERETT CROCCO

ENSEMBLE

BRANDON ANDRUS, MICHAEL DELEGET, MATT FAUCHER, STEVE FRENCH, ANDREW HUBACHER, MARISSA MCGOWAN, RACHEL ALEXA NORMAN, REBECCA PITCHER, RACHEL RINCIONE, ALLAN SNYDER, MATTHEW C. THOMPSON, MOLLIE VOGT-WELCH

SWINGS

SHAWN PENNINGTON, AMANDA SALVATORE

DIALECT COACH

GILLIAN LANE-PLESCIA

DANCE CAPTAIN

MARISSA MCGOWAN

ASSISTANT STAGE MANAGER

DEREK MICHAEL DIGREGORIO

UNDERSTUDIES

Arthur **ALLAN SNYDER**; Guenevere **MARISSA MCGOWAN**; Lancelot **MICHAEL DELEGET**;
Mordred **MATT FAUCHER**; Pellinore **HERMAN PETRAS**; Merlyn **STEVE FRENCH**;
Tom of Warwick **BEN SWIMMER**; Nimue **RACHEL RINCIONE**

ORCHESTRA

Conductor/Keyboard I **MICHAEL O'FLAHERTY**;
Associate Conductor/Keyboard II **F. WADE RUSSO**; Trumpet **MARK SLATER**;
Trombone **DAVE KAYSER**; Reeds **LIZ BAKER SMITH**; Violin **KARIN FAGERBURG**;
Harp **SUSAN KNAPP-THOMAS**; Percussion **SALVATORE RANNIELLO**

ALTERNATES

Keyboard II **WILLIAM J. THOMAS, MOLLY STURGES**; Trumpet **TOM CONTI, LARRY GARREAU**,
KEN ROE; Trombone **SCOTT BEAN**; Reeds **MICHAEL SCHUSTER**; Violin **DIANE ORSON**;
Harp **AMANDA EVANS, MEGAN SESMA**; Percussion **STEVE COLLINS, DAVE EDRICKS**

Out of respect for our actors and your fellow theatergoers, we ask that you remain seated until the curtain calls are over and the house lights have come up. The use of cameras, cellular phones, or recording devices is not permitted in the theatre. Thank you.

Musical Numbers

Synopsis of Scenes & Musical Numbers

ACT ONE

Prologue, A Battlefield outside Joyous Gard Castle

Scene 1, A Forest near Camelot—Ten Years Prior

I Wonder What the King is Doing Tonight..... Arthur
The Simple Joys of Maidenhood..... Guenevere
Camelot..... Arthur & Guenevere
Follow Me..... Nimue

Scene 2, Arthur's Study—Eight years later

Camelot (Reprise)..... Arthur & Guenevere

Scene 3, The Countryside near Camelot—A few months later

C'est Moi..... Lancelot

Scene 4, A Park near the Castle—Immediately following

The Lusty Month of May..... Guenevere & Company
Take Me to the Fair..... Guenevere, Sir Dinadan, Sir Sagamore, Sir Lionel

Scene 5, Arthur's Study—Sundown, two weeks later

How to Handle a Woman..... Arthur

Scene 6, The Grandstand of the Jousting Field—the next day

The Jousts..... The Company

Scene 7, Arthur's Study—Early evening, the same day

Before I Gaze at You Again..... Guenevere

Scene 8, The Great Hall—Immediately following

ACT TWO

Scene 1, The Castle Gardens—A few months later

Knight Songs..... Sir Clarius, Sir Angus, and The Knights
Toujours..... Lancelot
Before I Gaze at You Again (Reprise)..... Guenevere

Scene 2, The Throne Room—A month later

The Seven Deadly Virtues..... Mordred

Scene 3, The Terrace of the Castle—A month later

What Do the Simple Folk Do?..... Arthur & Guenevere

Scene 4, A Forest near Camelot—The next day

Scene 5, The Queen's Bedchamber—Later that night

I Loved You Once in Silence..... Guenevere
If Ever I Would Leave You..... Lancelot

Scene 6, Camelot—Immediately following

Guenevere..... The Company

Scene 7, A Battlefield outside Joyous Gard Castle

Camelot (Reprise)..... Arthur

There will be a 15-minute intermission between acts.



WHO'S WHO



RONN CARROLL* (*Pellinore*) is back at Goodspeed, following his Ben Franklin in 1776. Recent New York appearances include Trevor Nunn's *Oklahoma!*, and the premiere of *A Man of No Importance*. Among his 20 Broadway credits are *How To Succeed* (Matthew Broderick); *Gypsy* (Tyne Daly); *The Rink*; *Bad Habits*; *On Golden Pond*; *Steel Pier*; *Man of La Mancha*; *The Mystery of Edwin Drood*; *Crazy For You*; *Peter Pan*; *Promises, Promises* (London and New York); and revivals of *Carousel*, *Wonderful Town*, *Front Page*, and *Annie Get Your Gun* with Ethel Merman (1966) and Bernadette Peters (1998). Off Broadway: *Love's Labor Lost* and *The Knife (The Public)*, and *Greater Tuna*. Regional: Gayev in *Cherry Orchard*, Bensingier in *Front Page*, and Gloucester in *King Lear*. 500 commercials, TV and Feature films have supported his theater habit. He lives with his wife Anne in Chapel Hill, North Carolina.



CHARLES EVERETT CROCCO (*Tom of Warwick*) is thrilled to be back at the Goodspeed where he appeared in *Genesis* in the 2008 Festival of New Artists and as an understudy in *High Button Shoes* in 2007. He also voiced Young Alvin in *The Story of My Life* at The Norma Terris Theatre in 2008. Other roles include Willy Wonka in *Willy Wonka Jr.* (Haddam Killingworth Middle School), Young Josh in *Big* (Artful Living), Charlie in *Really Rosie* (HK Middle School), and Nathan Detroit in *Guys and Dolls* (Community Music School's Summer Workshop). He would like to thank his loving parents and extended family for their ongoing encouragement and support. He is also very grateful to Goodspeed for this wonderful opportunity.



ERIN DAVIE* (*Guenevere*) Broadway: *Grey Gardens* (Young Little Edie) - Theatre World Award for Outstanding Broadway Debut, *Curtains* (Niki Harris). Off Broadway: *The Glorious Ones* at LCT; *Infertility (The musical that's hard to conceive)*. Encores!: *Applause* (Eve Harrington). National Tours: *Swing!*, *The Music of Andrew Lloyd Webber*. Some Regional: *The Apple Tree* at Pennsylvania Centre Stage, *A Little Night Music* at White Plains PAC, *70 Years of Munny Magic* at the St. Louis MUNY, *Carousel* at The Olney Theatre Center, *Jekyll & Hyde* at SurfFlight Theatre, *The Student Prince* at Virginia Musical Theater. Recordings: *Grey Gardens* Original Broadway Cast, *The Glorious Ones*.



MAXIME de TOLEDO* (*Lancelot*) New York: *Yank* (Mitch); *Busker Alley* (Duchesi); *Camelot* (Live from Lincoln Center on PBS); *Showboat* (Carnegie Hall); *Oh, Lady! Lady!* (Willoughby); *Mademoiselle Modiste* (Rene); *The Seagull* (Sorin, original cast recording); *Roman Fever* (Eduardo, original cast recording). Regional and International: *Camelot* (Lancelot) with the North Shore Music Theatre, *The Sound of Music* (Captain von Trapp), *Gigi* (Gaston Lachaille), *Spring is Here* (Stacy Hayden), *Titanic* (Lightoller), *Hair* (Tribe). Film and TV: "The Sopranos," "All My Children," "Guiding Light," *One Last Thing* (with Ethan Hawke and Cynthia Nixon, Tribeca Film Festival 2006), *The Women, Foulard* (Cannes Festival 2007), *The Last Beat*, *The Dead*. www.maximedetoledo.com



BRADLEY DEAN* (*Arthur*) most recently appeared on Broadway as Sir Galahad in *Spamalot* and Off-Broadway as El Gallo in *The Fantasticks*. Other Broadway: *Company*, *Man of La Mancha*, *The Story of My Life*, and *Jane Eyre*. NYC: *The Big Time*, *Harmony*, *Walmartopia*. He has toured nationally as Che in *Evita* directed by Hal Prince and internationally as Frank N. Furter in *The Rocky Horror Show*. Regional credits include *No Way to Treat a Lady*, *Falsettos*, *The Caretaker*, *Loot*, and the title roles in *Phantom*, *The Scarlet Pimpernel* and *Macbeth* at such theaters as Paper Mill Playhouse, The Alliance, St. Louis Rep., and Pittsburgh CLO. A graduate of Carnegie Mellon, Bradley is husband to Eileen and father to Ana, Emma, and Oliver.

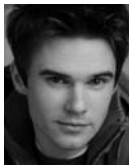


HERMAN PETRAS* (*Merlyn*) most recently played Nunzio in *Over the River and Through the Woods* at the John W. Engeman Theater in Northport, NY. He has toured Europe and Southeast Asia with *West Side Story*, logging in nearly 300 performances as Doc. National tours include the dual role of Harry/Baptista in *Kiss Me, Kate*; Mr. Scheinkopf in *Fame: the Musical*; and Horace Vandergelder opposite Carol Channing in *Hello, Dolly!*. Regional credits include *Beauty and the Beast*, *The Merchant of Venice*, *King Lear*, *The Two Gentlemen of Verona*, and various television appearances on "All My Children," "Law and Order," and "Saturday Night Live."

*Member of Actors' Equity Association, the Union of Professional Actors and Stage Managers in the United States.



WHO'S WHO



ADAM SHONKWILER* (*Mordred*) Adam is excited and grateful to be back at Goodspeed after last season's *Big River* and 2003's *A Tree Grows in Brooklyn*. National Tour: Earl in Andrew Lloyd Webber's *Whistle Down the Wind*. New York: Hanschen in *Spring Awakening* (Lincoln Center), *Good News* (Musicals Tonight), *Greenwillow* (York). Regional: Huck in *Big River* (Arizona Broadway Theatre). He can be seen in the film *The Private Lives of Pippa Lee*, out this year. Adam is a Montana native and earned his BA at Mountview Academy in London, England. AEA



BRANDON ANDRUS* (*Sir Lionel, Ensemble*) is thrilled to be a part of this amazing cast! This is his first performance at Goodspeed. You may have seen him before in *All Shook Up* (Chad) Maine State Music Theater, *Oklahoma!* (Curly) 1st National Tour, *Ilyria* (Orsino) Prospect Theater Co., *Damn Yankees* (Rocky) Carousell Dinner Theater, and "Guiding Light" (Officer Tucker). He is also good friends with many Disney characters. Brandon is an Ithaca College graduate and proud member of AEA. He would like to thank Rob Ruggiero and the entire production team for this opportunity, Michael for sticking with me, Kim for the fresh breath, his parents for always letting him come home, and his wife Deven for making his life FAR from boring.



MICHAEL DELEGET* (*Sir Clarius, Ensemble*) Goodspeed Debut! Mr. Deleget holds degrees from Wabash College and Indiana University. Regionally, he has been seen as Giuseppe in *The Most Happy Fella* starring George Hearn at Ravinia, Jamie in *The Last Five Years* at Skylight Opera Theatre, Tony in *West Side Story* at Maine State Music Theatre, and most recently toured with Atlanta TOTS's production of *Les Misérables*. Other credits include the Bernstein *Mass* at Carnegie Hall. Love to Alison. www.michaeldeleget.com



MATT FAUCHER* (*Squire Dap, Ensemble*) Making his Goodspeed debut and is delighted to be a part of the *Camelot* cast. Familiar to the Connecticut theatre scene, he has performed at Hartford Stage, Goodspeed's Festival of New Artists, and The Bushnell. He recently made his NYC debut with a reading of *The Road to Hollywood* in the role of crooner Beau Hartmen. He attended The Hartt School and graduated with a BFA in Acting in 2008. Favorite roles include the title role

in *Macbeth*, Puck in *A Midsummer Night's Dream*, Sky Masterson in *Guys and Dolls*, Hildy Johnson in *The Front Page*, and Artie in *House of Blue Leaves*.



STEVE FRENCH* (*Sir Sagamore, Ensemble*) is honored to return to Goodspeed, having made his debut here in last season's *Big River*. New York: Zootopia Theatre Co., The Actor's Company Theatre, Second Stage, The Alternate Theatre. Regional: Hartford Stage, Long Wharf, Monomoy. Steve wants to thank his fellow cast members and theatre staff for putting up with his incessant banjo playing, a habit he developed courtesy of Goodspeed Hootenannies. For Allison.



ANDREW HUBACHER* (*Ensemble*) Goodspeed Debut! Andrew attended the Baldwin-Wallace Conservatory of Music in Cleveland, Ohio. Favorite past productions include *The Music Man* and *Jesus Christ Superstar*, both with the Kansas City Starlight Theatre; Jamie in *The Last 5 Years*; and Matt in *The Fantasticks*. Gratitude goes out to my always supportive family and friends. In Christ.



MARISSA MCGOWAN* (*Ensemble*) is thrilled to be returning to Goodspeed where she was last seen as Mary Jane in *Big River*. Broadway: *Les Misérables* (revival), where she performed the roles of both Eponine and Cosette. National Tour: *Les Misérables*. Regional favorites: Maria in *The Sound of Music* (Lyric Theatre); Johanna in *Sweeney Todd* (Geva Theatre); the title role in *Fanny* (York Theater); Lois/Bianca in *Kiss Me, Kate* (Weston Playhouse); Graziella in *West Side Story* (Syracuse Stage). BFA Musical Theater Syracuse University. Love and thanks to John.



RACHEL ALEXA NORMAN* (*Ensemble*) is thrilled to be making her Goodspeed debut in *Camelot*. NYC credits include Sylvie in *The Happy Time* (Musicals Tonight!), originating the role of Franny Wilderman in *Graduation Day* (Abingdon Theatre), and Humpty Dumpty in *Babes in Toyland* (Avery Fisher Hall). Regional credits include: Suzy Ward in *Babes in Arms* (The Barnstormers Theatre; New Hampshire Theatre Award Best Actress winner), Heidi in *Heidi: The Musical* (The Hangar Theatre). Rachel also wrote and starred in her one-woman cabaret act *I'll Take Manhattan*, which was a 2008 nominee for Best Female Debut. Training: NYU, LAMDA.

*Member of Actors' Equity Association, the Union of Professional Actors and Stage Managers in the United States.



WHO'S WHO



REBECCA PITCHER* (*Nimue, Ensemble*) has performed around the world to rave reviews. Described as having a luminous presence and a spectacular voice, Rebecca has moved audiences with her poignant portrayal of Christine Daae in *The Phantom of the Opera* by Andrew Lloyd Webber. Her repertoire includes Johanna in *Sweeney Todd*, Rose in *Street Scene*, Rapunzel in *Into the Woods*, Monica in *In the Medium*, Papagena and The Queen of the Night in *The Magic Flute*, and many more. She is also a certified Bikram yoga instructor. "Namaste."



RACHEL RINCIONE (*Ensemble*) Goodspeed debut. BFA Acting from Chapman University, MM Vocal Performance from the University of Denver. NY Credits: *Avarice* (Faith Reynolds with Wilson Heredia), *Camelot* (Nimue with Robert Cuccioli as King Arthur, White Plains PAC) *Suor Angelica* (La Cercatrice, Chelsea Opera). Regional: *Groove 66/A Chance to Shine* (Disney Entertainment), *The Marriage of Figaro* (Countess), *The Merry Wives of Windsor* (Mrs. Ford), *Manon* (title role), *La Boheme* (Musetta), *Chess* (Florence). She has been nominated twice for the prestigious Irene Ryan award. Love to Mom, Dad, and The Bun.



ALLAN SNYDER* (*Sir Dinadan, Ensemble*) is pleased to make his Goodspeed debut! He has appeared on Broadway in *Les Misérables*, and regionally in *The Scarlet Pimpernel* (Percy), *The Full Monty* (Jerry), *110 in the Shade* (Starbuck), *Beauty and the Beast* (Gaston), and *Irving Berlin's White Christmas* (Bob Wallace), among others. A native Californian, Allan is a graduate of NYU and a proud Equity member. Thanks to Rob and love to K!



MATTHEW C. THOMPSON (*Sir Angus, Ensemble*) Goodspeed Opera House debut. Regional: *1776* (Paper Mill Playhouse), *Parade* (SpeakEasy). Recent graduate of The Boston Conservatory (MM in Musical Theater), where his favorite projects included *Chess* (Anatoly), *Iolanthe* (Strephon), and *A Bernstein Tribute* with the Boston Pops. BA in Sociology from Boston College and a Fulbright Scholar (Germany).



MOLLIE VOGT-WELCH* (*Ensemble*) Excited to make her Goodspeed debut! Previously seen on Broadway in *A Tale of Two Cities*. National Tours: *Peter Pan* (Wendy), *Camelot* (Guenevere). Other credits: *The Fantasticks* (Luisa) PA Centre Stage, *Ragtime* (Evelyn Nesbit), *A New Brain* (Nancy D.), *Brigadoon* (Fiona u/s), *Rimers of Eldridge* (Patsy). Proud Penn State BFA grad and Potsdam native. Love to JT and Chap.



SHAWN PENNINGTON (*Swing*) couldn't be happier to be making his Goodspeed debut! National Tours: *Camelot*, *The Sound of Music*, *Fame: The Musical*, and *Man of La Mancha*. Regional: *Jekyll & Hyde* (Jekyll/Hyde); *Phantom* (The Phantom); *Kiss Me, Kate* (Fred Graham). a stage manager. PSM National Tour credits include: *Smokey Joe's Café*, *The Will Rogers Follies*, and *Gypsy*. Love to Mom, Dad, Mark, and Beth!



AMANDA SALVATORE (*Swing*) A recent graduate from DeSales University in Center Valley, Pennsylvania, where she received her BA in acting/directing. Making her Goodspeed debut. Recent credits include *If You Give a Pig a Party* at Manhattan Children's Theatre and *Dominique* in the Broward Stage Door's Theatre's production of *Lucky Stiff*. Favorite roles include Marian Paroo (*The Music Man*), Miss Dorothy Brown (*Thoroughly Modern Millie*), and Lilly St. Regis (*Annie*). She would like to dedicate this show to her parents and to her GBF4E.



BEN SWIMMER (*Tom of Warwick understudy*) Introducing 12 year old Ben Swimmer and his adorable dimples. A superstar in the making due to the love and support of his parents and brothers. Ben is an amazing young talented actor who is so excited to be a part of Goodspeed Musical's production of *Camelot*. Recently, Ben was lucky enough to be cast in the 8 Minute Madness Youth Festival in New York City and looks forward to being part of many more theatre, TV and film projects. Ben is represented by Serendipity Entertainment and is part of their A-List Youth Division.

*Member of Actors' Equity Association, the Union of Professional Actors and Stage Managers in the United States.



WHO'S WHO

MICHAEL P. PRICE (*Executive Director*) is now in his 41st year as Executive Director of Goodspeed Musicals. Under his direction the Goodspeed became known for its dedication to the American musical and the development of new works of this genre, including *Annin* and *Shenandoah*. He has received two special Antoinette Perry (Tony) Awards. He is chairman of the Connecticut Commission of Culture and Tourism. Mr. Price is a founding member and past vice president of the National Alliance for Musical Theatre. He is the founder of the League of Historic Theatres and served as its first president. He is the vice president of the American Theatre Wing and is a member of the Tony Awards Management Committee. He earned a BA from Michigan State, an MA from Minnesota University, and an MFA from Yale. Michael is the recipient of honorary doctorates in fine arts, *honoris causa*, from Connecticut College and the University of Hartford.

BOB ALWINE (*Associate Producer*) Before joining Goodspeed, Bob worked as the Associate Managing Director of The Old Globe in San Diego, California, and the Director of Programming for The Ordway Center in St. Paul, Minnesota. While at the Globe he developed the national tour of *Stones in His Pockets* and at the Ordway he was the associate producer of the national tour of *Buddy: The Buddy Holly Story*. Bob holds an MFA in theater management and creative producing from Columbia University.

DONNA LYNN COOPER HILTON (*Line Producer*) is in her 22nd season at Goodspeed and assumed the duties of Line Producer in December 2006. She previously served as Goodspeed's Production Stage Manager and has worked on over 60 Goodspeed productions, beginning with *Wonderful Town* in 1988. As PSM she transferred Goodspeed's production of *Gentlemen Prefer Blondes* to Broadway. Donna Lynn currently serves as co-chair of the Selection Committee for the National Alliance for Musical Theatre's New Works Festival and served as a consulting producer for the 2007 Festival. She has lectured at the Yale University School of Drama and Southern Connecticut State University. A native of North Carolina and a graduate of East Carolina University, Donna Lynn and her husband, Goodspeed Lighting & Sound Supervisor Jay Hilton, make their home in East Haddam with Jack.

ROB RUGGIERO (*Director*) is delighted to be returning to Goodspeed after having directed *Big River* and *1776*, which garnered him his third and fourth Connecticut Critic Circle Awards for "Best Director." Connecticut audiences are also familiar with his work through his association with TheaterWorks in Hartford, where he has been a key partner in the artistic leadership since 1992. Recent projects at TheaterWorks include a production of *The Little Dog Laughed* (starring Chad Allen) and

conceiving and directing an original musical revue entitled *Make Me A Song: The Music of William Finn*, which had a successful run off-Broadway in 2007 as well as a London production. The production received nominations for both the Drama Desk Award for "Outstanding Review" and the Outer Critics Circle Award for "Outstanding New Off-Broadway Musical." In 2005 he conceived and directed the highly successful *Ella*, which continues to be produced nationally and recently won three Joseph Jefferson Awards and two Kevin Kline Awards (including "Outstanding Director of a Musical" for both). Mr. Ruggiero directed the world premiere of Matthew Lombardo's new play *Looped* (with Valerie Harper) at the Pasadena Playhouse, which had a recent production at Arena Stage with a planned Broadway opening in 2009-2010 season. Mr. Ruggiero's work on both plays and musicals has been seen at many regional theaters around the country, including Arizona Theatre Company, Barrington Stage Company, Cincinnati Playhouse in the Park, Cleveland Playhouse, The Pittsburgh Public Theater, The Repertory Theatre of St. Louis, and San Jose Repertory Theatre. He is the recipient of four Kevin Kline Awards, two for "Best Director of a Musical" (*Urinetown*, *Ella*) and two for "Best Director of a Play" (*Take Me Out*, *The Little Dog Laughed*). An online portfolio of his work can be viewed at www.robruggiero.com.

RALPH PERKINS (*Choreographer*) is thrilled to return to Goodspeed after choreographing *1776* in 2007. He received two Kevin Kline Award nominations for outstanding choreography for his work on *Urinetown* and *Kiss Me, Kate* at The Repertory Theater of St. Louis. Ralph resided in Las Vegas for several years where he choreographed for *EFX* at the MGM Grand, *Siegfried and Roy*, and *Tournament of Kings*, to name a few. He was artistic director and cofounder of The New Works Project, a contemporary dance company in Las Vegas, and received an Artist Fellowship Award from the Nevada State Council on the Arts for artistic achievement. Ralph has choreographed numerous productions for The Monomoy Theater on Cape Cod and in Las Vegas, as well as a revival of *Sweet Charity* for Barrington Stage Company in Sheffield, Mass. Ralph is the Director of Dance for the Theatre Division of The Hart School. This year he made his main stage directorial debut there with *The Who's Tommy*. Online portfolio at www.ralphperkins.com.

MICHAEL SCHWEIKARDT (*Set Design*) Recent credits include *Ella*, a musical about jazz legend Ella Fitzgerald which is appearing in cities all across the country; critically acclaimed productions of *1776* and *Big River* for Goodspeed Musicals; *Barnum* for The Asolo Rep's 50th anniversary season; American premieres of Frank McGuinness' *Gates Of Gold* and *The Bird Sanctuary*;

**Member of Actors' Equity Association, the Union of Professional Actors and Stage Managers in the United States.*



WHO'S WHO

Oklahoma! starring Kelli O'Hara and Will Chase celebrating The Oklahoma State centennial; and National and International Tours of James Taylor's *One Man Band*. Upcoming projects include the world premiere of the new Duncan Sheik/Kyle Jarrow musical *Whisper House* opening at San Diego's Old Globe Theatre in January 2010. Online portfolio: www.msportfolio.com

ALEJO VIETTI (*Costume Design*) New York: *Rooms, Grace, Make Me a Song, Tryst, Roulette, The Last Sunday in June, 16 Wounded, 2 X Tennessee, The Wau Wau Sisters, Servicemen, Five Flights, Measure for Measure, Irving Berlin's White Christmas*. Regional: Alley Theatre, Arena Stage, Arizona Theatre, Asolo Rep, Barrington Stage, Cincinnati Playhouse, Cleveland Playhouse, Colorado Ballet, Florida Stage, Ford's Theatre DC, Goodspeed, Hangar Theatre, Hartford Stage, Long Wharf, Metrostage, NY Stage & Film, Northlight, Pasadena Playhouse, Philadelphia Theatre Co, Pittsburgh Public, Rockland Opera, San Diego Rep, Saint Louis Rep, Signature Theatre VA, Theatreworks Hartford, Westport Country Playhouse, Williamstown Theatre Festival. Edinburgh Festival Fringe and Donetsk Opera Ukraine. Ringling Bros Barnum & Bailey Gold Unit 08/09.

JOHN LASITER (*Light Design*) Goodspeed: *Big River, 1776*. Off Broadway: *Make Me A Song*, Alarm Dog Repertory Company, Blue Light Theater, Music Theater Group. Regional: Actors Theatre of Louisville, Arena Stage, Arizona Repertory Theatre, Asolo Repertory, Centerstage, Cincinnati Playhouse, Cleveland Play House, Dallas Theater Center, Florida Stage, George Street Playhouse, Geva Theatre, Guthrie Theater, Milwaukee Repertory Theater, Northlight Theatre, Pittsburgh Public, South Coast Repertory, Syracuse Stage, Virginia Stage, Repertory Theatre of St. Louis. Opera: Eos Orchestra, Curtis Institute of Music, Glimmerglass Opera, Manhattan School of Music, Opera Delaware, Opera Carolina and Skylight Opera. Dance: Ballet Memphis, Danzantes LA, Irene Hultman, Nora Reynolds and Randy James Dance Works. For more information, visit www.johnlasiter.com.

JAY HILTON (*Sound Design*) Jay is proud to be in his 25th season with Goodspeed. Since 1985 he has designed or provided sound for nearly 70 productions at the Opera House and well over 50 productions at Goodspeed's Norma Terris Theatre in Chester. Jay's sound effects have been heard on Broadway, national tours and at regional theatres from coast to coast. In addition to his design duties Jay serves as Goodspeed's Lighting & Sound Supervisor. Jay and his wife, Goodspeed's Line Producer Donna Lynn Hilton, make their home (and garden) in East Haddam. Jay would like to thank his splendid staff for their hard work and dedication.

CHARLES LaPOINTE (*Hair & Wig Design*) Broadway: *The Lieutenant of Inishmore, The Rivals, Henry IV, Cymbeline, Sight Unseen, Julius Caesar, 33 Variations, Desire Under the Elms, Radio Golf, Cat on a Hot Tin Roof, A Raisin in the Sun, The Color Purple, Jersey Boys* and all tours, *The Apple Tree, Martin Short: Fame Becomes Me, High Fidelity, In the Heights, Good Vibrations, Guys and Dolls, Xanadu*. Tours: *Jersey Boys*: Tour 1; *Chicago*: Las Vegas, London, Toronto, Melbourne; *Dirty Dancing*; *Xanadu*; *The Color Purple*; *Little House on the Prairie*; *Ella*. Many Regional and Off Broadway credits. Love you, James.

GILLIAN LANE-PLESCIA (*Dialect Coach*) is pleased to return to Goodspeed, where she coached *Big River, Half a Sixpence*, and *1776*. She most recently coached *The Philanthropist* on Broadway. Regional work includes The Acting Company, Actor's Theatre, Alley Theatre, Arena Stage, CenterStage, McCarter, Goodman, Guthrie, Hartford Stage, Huntington, Long Wharf, Milwaukee Rep, NJ Shakespeare, Playmakers Rep, Seattle Rep, Shakespeare Theatre (DC), Steppenwolf, TheaterWorks, Trinity Rep, Wilma Theater, Yale Rep. She was English Diction coach at Chicago's Lyric Opera for five seasons. She teaches in the Juilliard School's Drama Division. Her self teaching dialect CDs for actors are used throughout the US and overseas.

DAN DeLANGE (*Orchestrator*) has orchestrated shows for Paul Williams, Julie Andrews, Jerry Herman (composer of *Hello, Dolly!*; *Mame*; *La Cage aux Folles*), Harvey Schmitt (composer of *The Fantasticks, 110 in the Shade*), and Peter Link (composer of *The King of Hearts*). He also orchestrated the premiere of *You Never Know* by Charles Strouse (composer of *Annie* and *Bye Bye Birdie*.) Other original orchestrations and arrangements include Enrico Garzilli's *Rage of the Heart* CD, *The Smart Set, The Altos*, The Broadway Tenors (with Brent Barrett, Brian D'Arcy James, and Alan Campbell), the Pittsburgh Public Theater, The Epic Brass Symphonic Christmas Series, The American Symphony Orchestra, and music for several commercials and documentaries. Dan has conducted the Broadway national tour of *Chicago* with Brent Barrett and Karen Ziemba, and was music director/conductor for Musical America's national tours of *Crazy For You, Beauty and the Beast*, and *Singin' in the Rain*. He is a graduate of Interlochen Arts Academy and Oberlin Conservatory of Music.

MICHAEL O'FLAHERTY (*Music Director*) is in his 17th season as Goodspeed's Resident Music Director, having conducted 34 musicals at the Opera House and five at The Norma Terris Theatre. His musical arrangement credits include *Gentlemen Prefer Blondes* (Broadway), *Reunion-A Musical Epic in Miniature*,

**Member of Actors' Equity Association, the Union of Professional Actors and Stage Managers in the United States.*



WHO'S WHO

Carol Hall's *To Whom It May Concern*, and *Red, Hot and Blue!* (GOH and Paper Mill Playhouse). He has worked at North Shore Music Theatre, Playwrights Horizons, Ford's Theatre, The Brooklyn Academy of Music, The Kennedy Center, Pittsburgh Public Theatre, The Smithsonian Institution, and was the musical supervisor and Cabaret Director of the Williamstown Theatre Festival for 11 years. Michael conducted the Goodspeed Musicals productions of *By Jeeves* and *Gentlemen Prefer Blondes* on Broadway.

F. WADE RUSSO (*Assistant Musical Director*) Wade has worked on over 16 productions here at Goodspeed including the National Tour of *The Boy Friend* directed by Julie Andrews. He most recently conducted *Pirates* at the Huntington Theatre in Boston. Broadway: *By Jeeves* (assistant conductor). Regional Theatre: *Cabaret*, *The Mikado*, *Pirates of Penzance*, *Man of La Mancha*, *By Jeeves*, *Forum*, *Falsettos* (Pittsburgh Public Theatre), *Company* (Huntington Theatre), *Urinetown* directed by Rob Ruggiero (Repertory Theatre of St. Louis), *Mame* with Sandy Duncan (Barrington Stage), *West Side Story* (Gateway Playhouse), *Sunday in the Park with George* (St. Louis Art Museum), *The Life, Chess, 42nd Street*, *Showboat* (Boston Conservatory), *Adrift in Macao* (Lyric Theatre of Boston). Wade has served on the faculty of Circle in the Square Theatre School, the Juilliard School and currently the Boston Conservatory. As always, special thanks to Michael O'Flaherty and Steven Rodick.

STUART HOWARD, AMY SCHECTER, & PAUL HARDT, C.S.A. (*CASTING*) has cast hundreds of shows over the past 25 years in the USA, Canada, and Great Britain, and has now begun work on Tom Stoppard's *Cyrano* for the National Theatre of France. Among their favorites—Broadway: *August: Osage County*, *Gypsy* (Tyne Daly), *Chicago* (Bebe Neuwirth, Ann Reinking), *Sly Fox* (Richard Dreyfuss), *Fortune's Fool* (Alan Bates, Frank Langella), and the original *La Cage aux Folles*; Off Broadway: *I Love You, You're Perfect, Now Change* and *The Normal Heart*. They have begun work casting *Death and the Maiden* for London's West End and are the casting directors for the new production of *West Side Story* currently on Broadway. They are very pleased to be casting for Goodspeed again this year.

R. GLEN GRUSMARK (*Production Manager*) is a native of San Diego, CA, and first became active in technical theatre while attending high school in central Vermont. He is a graduate of North Carolina School of the Arts, where he earned a scholarship for artistic excellence and a BFA in technical production. Companies Glen has worked with include Brunswick Music Theatre, Blowing Rock Stage Company, Adirondack Scenic Studios Inc., and North Carolina Dance Theatre. Glen's Goodspeed debut was in 1989 as a carpenter for *Oh, Kay!*. He returned to Goodspeed in 1993 for *On the Town*. He is proud to be a part of the Goodspeed team and is grateful to his mother and father for their continued encouragement and support.

BRADLEY G. SPACHMAN* (*Production Stage Manager*) hails from the Chicago area and is proud to be working with Goodspeed Musicals for his 14th season. He is enjoying his second year in the PSM's seat. In East Haddam, some of his favorite Opera House productions include *George M!*, *King of Hearts*, and *1776*. He also stage managed *O. Henry's Lovers*, *The Baker's Wife*, and *Lizzie Borden* at The Norma Terris Theatre. In addition, he has enjoyed working for several other regional theaters across the country, including Yale Repertory Theater and Connecticut Repertory Theatre. Outside of Connecticut, he brought Goodspeed's productions of *Pippin* and *The Boy Friend* to cities across North America. In Chicago, he has worked at the Goodman and Lookingglass theaters as well as on the original Chicago tryout of *Smokey Joe's Café*. Brad has never appeared on "Law & Order." Thanks to everybody who made this possible!

DEREK MICHAEL DIGREGORIO* (*Assistant Stage Manager*) is thrilled to be back at Goodspeed this season. Past productions here include *Pippin*, *1776*, *Happy Days* (Norma Terris and Opera House), *Half a Sixpence*, *Big River*, and *Emmet Otter's Jug-Band Christmas*. New York credits include *Applause* at City Center Encores!. Other regional credits include *Black Snow*, *Safe in Hell*, and *Comedy on the Bridge/Brundibar* (Yale Repertory Theatre); *Moon Over Buffalo* and *The Odd Couple* (Summer Theatre at Salem). Derek holds a BA from Salem State College and an MFA from Yale School of Drama. He is a proud member of Actors' Equity Association.

*Member of Actors' Equity Association, the Union of Professional Actors and Stage Managers in the United States.



ABOUT THE AUTHORS

ALAN JAY LERNER (*Book and Lyrics*) was born in New York in 1918. In 1942 Lerner wrote his first musical with Frederick Loewe called *Life of the Party*; in 1943, they wrote their first Broadway musical, *What's Up?* The team went on to write *The Day Before Spring* in 1945 followed by their first hit, *Brigadoon*, in 1947. Lerner wrote the libretto for *An American in Paris*, the first musical film to win an Oscar. Lerner and Loewe teamed up again in the 1950s to write *Paint Your Wagon*, the mega-hit *My Fair Lady*, the film *Gigi* (winner of nine Oscars, including Best Picture), and *Camelot* in 1960. After the retirement of Frederick Loewe, Lerner went on to write *On a Clear Day You Can See Forever* and *Carmelina* with Burton Lane, *Coco* with Andre Previn, *1600 Pennsylvania Avenue* with Leonard Bernstein, and *Dance a Little Closer* with Charles Strouse. Lerner and Loewe reunited in 1973 to provide Broadway with a stage version of *Gigi*. Alan Jay Lerner died in 1986 at the age of 67.

FREDERICK LOEWE (*Music*) was born in Vienna in 1901. A child piano prodigy at age 4, he made his concert debut with the Berlin Symphony Orchestra at age 13. Coming to America in 1930, Loewe wandered about in such odd jobs as cowpunching in Montana, gold prospecting in Colorado and saloon hall piano playing everywhere. In 1942, on the brink of establishing himself as a composer of popular songs, Loewe approached Alan Jay Lerner at a club in New York and said he would like to collaborate with him on a musical show. The two went on to enjoy a notable partnership that lasted 18 years, resulting in the musicals *Brigadoon*, *Paint Your Wagon*, *My Fair Lady*, and *Camelot*. In 1961 Loewe retired to the French Riviera until 10 years later, when Lerner persuaded him to write the score for a musical film based on *The Little Prince*, followed by creating new music for Lerner's expanded book and lyrics for the 1973 Broadway version of *Gigi*. Frederick Loewe died in 1988 at the age of 88.

PAST GOODSPEED PRODUCTIONS

2000

Man of La Mancha
George M!
Red, Hot and Blue!
◆ +Dorian
◆ +Summer of '42
+Dear World

2001

Brigadoon
◆ They All Laughed!
A Little Night Music
◆ +Double Trouble
+Great Expectations
+Lizzie Borden

2002

Dames at Sea
Babes in Arms
King of Hearts
+Actor, Lawyer, Indian Chief
◆ +The Road to Hollywood
+The Baker's Wife

2003

Me and My Girl
Very Good Eddie
A Tree Grows in Brooklyn
+Stand By Your Man: The Tammy Wynette Story
◆ +Camille Claudel
+O. Henry's Lovers

2004

Call Me Madam
Where's Charley?
Mack & Mabel
⌘ +All Shook Up
+Princesses

2005

Seven Brides for Seven Brothers
The Boy Friend
Abyssinia
◆ +Flight of the Lawnchair Man
+Amour
+The Girl in the Frame

2006

Li'l Abner
Pippin
Pirates of Penzance
◆ +The 60's Project
◆ +Meet John Doe
◆ +Caraboo, Princess of Javasu

2007

Singin' in the Rain
High Button Shoes
1776
+Happy Days

2008

Happy Days
Half a Sixpence
Big River
◆ Emmet Otter's Jug-Band Christmas
⌘ +13
⌘ +The Story of My Life

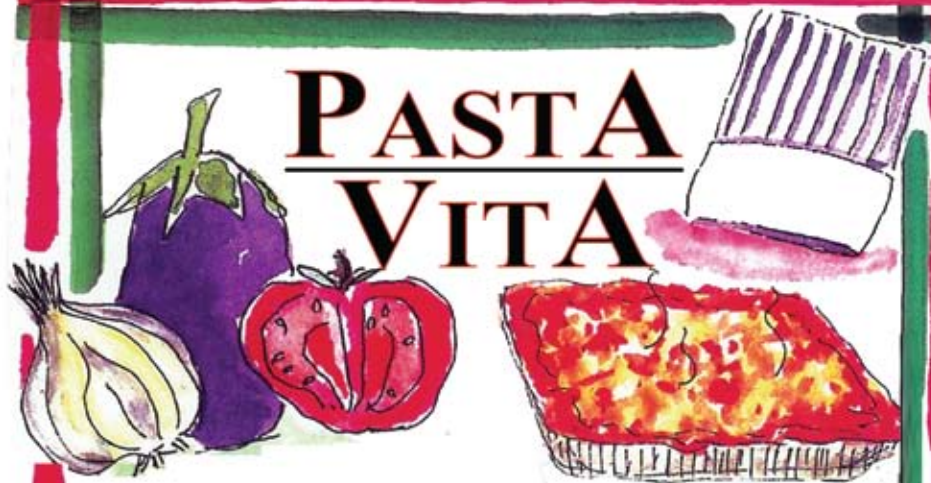
2009

42nd Street
+Lucky Guy
Camelot

For a complete list of Goodspeed Musicals' past productions from 1963 to the present, please visit our website at www.goodspeed.org/shows_past.aspx

⌘ Went on to Broadway + Produced at The Norma Terris Theatre ◆ World Premiere

PASTA VITA



The Place to Go for Gourmet to Go
HOURS:

Monday-Friday 8-6

Saturday 8-5:30

860-395-1452

pastavita.com



Old Saybrook, CT



Hot Fun

in the summertime...

The
Back Porch

Old Saybrook, Conn.



- Waterfront Dining
- Cocktails by the Fire Pit
- Live Music

860.510.0282



142 Ferry Road, Old Saybrook
www.backporcholdsaybrook.com

UNIQUE ITEMS FOR ART LOVERS

COOKBOOK WITH CD

Museum Cafés & Arts

*Inspired Recipes from Favorite Museum Cafés
Chamber Music by the Rossetti String Quartet*

A gift that is a journey to 16 beloved museums. You will love recipes from your favorite museum cafés. Includes stylish food photos, breathtaking images by famed artists, and descriptions of each museum by celebrities who love them.

The Rossetti String Quartet's beautiful and relaxing chamber music is perfect for creating an artful experience at home!

THE COOKBOOK

Museum of Fine Arts—Boston
Metropolitan Museum of Art
Philadelphia Museum of Art
National Gallery of Art
Art Institute of Chicago
J. Paul Getty Museum
San Francisco Museum
of Modern Art
Seattle Art Museum

THE MUSIC

Haydn, Mozart, Beethoven,
Debussy, Rachmaninoff, Gershwin
includes 11 selections, 68 minutes



\$33.95 Plus Shipping

The Pyongyang Concert

Lavin Maant and the New York Philharmonic

Hundreds of millions watched The New York Philharmonic's historic concert on television. Now exclusively on DVD: a live, 107-minute recording of the Pyongyang concert plus an exclusive, previously unreleased 53-minute documentary.

Watch and listen to the power of music in this courageous orchestral project uniting Americans and North Koreans.



\$24.95 Plus Shipping

Limited Production Great Composer Bobbleheads



Custom Designed & Crafted
Busts of Great Composers
& 1/2 Inches Tall
Each is a Limited Production

Great Composer Bobbleheads Features:
Johannes Brahms | S.S. Bach
Ludwig Van Beethoven
Wolfgang A. Mozart

Expertly custom-crafted bobbleheads of the greatest composers of all time. Considerable research and design development is put into each of the busts for the truest likeness of each composer. Each Great Composer Bobblehead is hand painted and checked for quality before being packaged in its own collector's box.

**\$14.95 each
or all 4 for
only \$49.95**
Plus Shipping

BOXED RECIPE CARDS WITH MUSIC CDS



Chocolate Bliss

*Dazzling Chocolate Dessert Recipes
Seductive Bossa Nova Music*

Indulge with perfect chocolate recipes, including Devil's Food Cupcakes, Chocolate Mousse, Chocolate Cheesecake, 15-Minute Chocolate Cake, Mudslide Cookies, and more. Sensational food photos, practical cook's tips, shopping lists, quotes, and fascinating chocolate lore and health facts! Legendary bossa nova performances by Antonio Carlos Jobim, Stan Getz, Paul Desmond, Gower Washington will surround you with the sound of romance.



The Cocktail Hour

*Cocktail Party Appetizers
Piano Jazz by the George Cables Trio*

Share these easy, stylish recipes for appetizers, cocktails, and sweets at your next cocktail party. Tips for hosting a cocktail party also included. The George Cables Trio sets the mood for absolutely fabulous evenings. Makes a perfect hostess gift!



Organic Vibe

*Seasonal Vegetarian Recipes
Cooking with Cool Jazz*

Sharon O'Connor's favorite vegetarian recipes for each of the four seasons with great jazz! Recipes include Seba Noodle Salad, Caesar-Ginger Soup, Zucchini Frittata, Mushroom Ragout with Soft Polenta, Chocolate Pudding. Every recipe card with an inspiring food photo, cook's tips, and shopping list. Seasonal produce chart included.

Jazz stars perform songs by Joni Mitchell, Sting, John Coltrane, and Stevie Wonder. Perfect for home cooking and entertaining. Good health begins in the kitchen and around the dinner table!



Rock and Roll Comfort Food

*Easy, Healthy, Fresh Home Cooking
Classic Rock & Roll*

Easy, satisfying recipes for family meals, casual dinner parties, and passing on to the next generation. The sturdy recipe cards—each with an inspiring food photo, cook's tips, and shopping list—travel easily from the kitchen to the grocery store. Thrilling rock & roll adds to the party with music that everyone loves. Classic hits include: Johnny B Good, Mustang Sally, My Guy, Green Onions, Blueberry Hill, and more!

\$21.95 each or all 4 for only \$79.95

Plus Shipping

Coldwell Banker Residential Brokerage

LEADING THE
LUXURY HOME MARKET...



...LOCALLY AND
AROUND THE WORLD



RESIDENTIAL BROKERAGE

ESSEX
3 Main Street
860.767.2636

OLD SAYBROOK
48 Main Street
860.388.1100

OLD LYME
86 Halls Road
860.434.8600

www.ColdwellBankerMoves.com



©2009 Coldwell Banker Real Estate LLC. Coldwell Banker is a registered trademark licensed to Coldwell Banker Real Estate LLC. An Equal Opportunity Employer. Equal Housing Opportunity. Owned and operated by NRT LLC. RE0465 05/09



Brushmill

by the Waterfall

fine dining & tap room



open daily
lunch • dinner • sunday brunch

129 West Main Street
Chester, CT 06412

(860) 526-9898

theBrushmill.com

Dive into History at the Connecticut River Museum



Adventure, Discovery & History in the Making



RIVER CRUISES

Explore the natural beauty and heritage of New England's Greatest River with on-water expeditions. Seasonal daily cruises and group tours available.



INTERACTIVE EXHIBITS

Climb aboard a working replica of the the world's first submarine. Pedal the pedals, crank the cranks, and learn about its role in the American Revolution.



EVENTS

They burned our ships and stole our rum! The British raid on Essex comes to life in the Burning of the Fleet exhibit. And don't miss the annual May parade and re-enactment.



EDUCATION

Discover the River's rich history and unique environment. Hands-on workshops, school programs, summer camps, and adventures for all ages.



Connecticut River Museum

67 MAIN STREET
ESSEX, CT 06426

860-767-8269
www.ctrivermuseum.org

DISCOVER NEW ENGLAND'S GREAT RIVER. 410 MILES OF WATER AND 450 YEARS OF HISTORY.

Enjoy the performance!

The law firm of
Robinson & Cole is
proud to support
Goodspeed Opera House.

For more information
call David Bogan at
(860) 275-8262.



ROBINSON & COLE
ATTORNEYS AT LAW

© 2009 Robinson & Cole LLP

RC.COM • HARTFORD • BOSTON • STAMFORD • NEW YORK • WHITE PLAINS • NEW LONDON • ALBANY • SARASOTA

THE LESS ART
KIDS GET, THE
MORE IT SHOWS.

ART
ASK FOR MORE.

Did You Know?

Young people who participate in the arts for at least three hours on three days each week through at least one full year are:

- **4 times** more likely to be recognized for academic achievement
- **3 times** more likely to be elected to class office within their schools
- **4 times** more likely to participate in a math and science fair
- **3 times** more likely to win an award for school attendance
- **4 times** more likely to win an award for writing an essay or poem



AMERICANS
for the ARTS

GET INVOLVED

www.americansforthearts.org/public_awareness

Old Saybrook's
Premier Health Club



FITNESS CLUB

455 Boston Post Road
at Saybrook Junction
860.388.1200

NOVEMBER 5 - 8
The Mikado

Music by Arthur Sullivan
Lyrics and Libretto by
W.S. Gilbert

DECEMBER 10 - 13
Band Geeks

Concept by Tommy Newman
Music by Mark Allen, Gaby Alter
& Tommy Newman
Lyrics by Gaby Alter &
Tommy Newman
Book by Tommy Newman &
Gordon Greenberg



THE HARTT SCHOOL
music dance theatre



UNIVERSITY OF HARTFORD

For a complete schedule of performances visit

www.hartford.edu/hartt

University Box Office

860.768.4228 or 800.274.8587



WESTBROOK INN

Bed & Breakfast

Voted The Most Elegant Inn

Westbrook, CT

800-342-3162 • www.westbrookinn.com

Visit Our Sister Inn

www.bushnellhouse.com
Westbrook, CT

BUSHNELL
HOUSE
HISTORIC INN



EST 1840



Plant Trees!
arborday.org



(860) 873-3339

Susan Pagnano, Owner

www.susans-salon.com

susan.susans@sbcglobal.net

338 Town Street

East Haddam, CT 06423

Now Offering:

- Full Service Salon
- Manicures and Pedicures
- Reiki & Hypnotherapy
- Lending Library
- Simple Elegance: A formal wear consignment boutique
- Gathering Place featuring
 - HEAL (**H**ealing **E**nergy **A**lliance): A Coop
 - Guest Speakers
 - Monthly Gatherings
 - Various Meetings/Presentations

Nurture Your Inner & Outer Beauty

WESTERLY, RHODE ISLAND



WINNAPAU G COTTAGES www.winnapaugcottages.com

AN ACTIVE ADULT COMMUNITY • 55+ MAINTENANCE FREE LIVING

Semi-Custom Detached Homes Starting in the high \$500,000s

One Level Living • Nestled within a 135 acre wooded nature preserve. Minutes to premier beaches, golfing, shopping and dining. Future plans for Independent Living, Assisted Living and recreational amenities.

Toll free 866-208-7558 ext. 1 • Tel. 401-315-2766 ext. 1 • richard@winnapaugcottages.com



**LYME ART ASSOCIATION
AND ART GALLERY, EST. 1914**
90 Lyme Street, Old Lyme, Connecticut www.LymeArtAssociation.org



Summer Painting and Sculpture Exhibition
June 26 - August 2

Cityscape Exhibition:
Exploring the Architecture and Life of Town and City
August 14 - September 20

New England Landscape Invitational
September 25 - December 5

Theater Special

All New!!

Hillside

New
Ownership!



Sweet Shoppe

19 Main Street
East Haddam

just a 3-minute walk from the Goodspeed!

(860) 873-8474

Coupon

Coupon

Buy 1 adult-size ice cream * * Get 1 FREE Scoop

Come shop=a=lot!



the fish sisters
clothing & accessories

You'll find all the great names you love! Like Bryn Walker, Flax, Habitat, Cut Loose and more, in fresh summer styles and colors!

2 norwich road, east haddam, ct 06423
860-873-1326

Hours: Tuesday-Sunday 10-5
(Just up the road from the Goodspeed!)



Christine Rizzo

M.S. L.Ac. C.H.

Acupuncture & Chinese Herbal Medicine

An holistic approach to optimal wellness and vitality

Christine maintains a well-rounded, holistic practice offering treatments that pertain to the context of our modern lives.

Her work is characterized by frank, compassionate and informative conversation. Christine offers treatment for body, mind and spirit in a range of therapeutic modalities.

- Acupuncture
- Chinese Herbal Medicine
- Yoga
- Meditation

455 Boston Post Rd. Suite 203A
Old Saybrook CT 06475
860-961-5560

www.connecticut-acupuncture.com

Inspired Living ... Exciting Future



Step into a world of charm and hospitality. The exceptional services of our senior residential community provide you with time for friends, family, and to explore many new opportunities that will inspire your life.

Visit Chester Village West soon to see our expansion and renovations, or view photos at www.ChesterVillageWestLCS.com
Click *Exciting Future*.



317 West Main Street • Chester, CT 06412
(860) 526-6800

 A Life Care Services Community



Chestelm

Health & Rehabilitation

- Short Term Rehab Care
- 24 Hour Skilled Nursing Care
- Respite Care
(short term stays to give caregiver a break)
- Outpatient Therapy
- Physical Therapy
- Occupational Therapy
- Speech Therapy
- Adult Day Care (transportation provided)

All Insurances Accepted—
Medicare, Medicaid, All Private Insurances



CALL FOR INFORMATION **860-873-1455**

534 TOWN STREET • EAST HADDAM, CT

*Two Distinctive Settings Where
Elegance Meets Excellence ...*

The Riverhouse at Goodspeed Station



55 Bridge Road Haddam, CT 860.345.4100
theriverhouse.com

The Society Room of Hartford



31 Pratt Street Hartford, CT 860.524.0796
hartfordsocietyroom.com



Weddings • Private Parties • Business Events • Catering



A Public Service of
The Publishers



WE LIVE IN THE HOUSE WE ALL BUILD.

Every decision we make has consequences. We choose what we put into our lakes and rivers. We choose what we release into the air we breathe. We choose what we put into our bodies, and where we let our children run and play. We choose the world we live in, so make the right choices. Learn what you can do to care for our water, our air, our land and yourself at earthshare.org. Earth Share supports more than 400 environmental and conservation organizations that impact you every day.

Visit us at earthshare.org



Earth Share

A pair of hands, one from the left and one from the right, are shown holding a glowing, ethereal sword. The hands are positioned as if they are about to draw the sword. The background is a deep blue with a subtle, darker blue pattern. The overall mood is professional and powerful.

Always a Great Performance

Big Firm Resources, Local Firm Attention.

You can count on our engagements to be well directed, our approach creative and innovative, and our people professional and polished.

Mahoney
Sabol & Company, LLP
CERTIFIED PUBLIC ACCOUNTANTS

An International Member of
BDO
SEIDMAN

www.MahoneySabol.com

Middletown
860.344.8883

Essex
860.767.9999

Glastonbury
860.541.2000

Somers
860.763.1774



SAVE 10% on OBAGI Skin Care Products



skin rejuvenation, botox®, radiesse®
restalyne®, juvéderm®, perlane®
face, brow & neck lifts
facial hair removal
obagi skin care system

Trust our **Board Certified** facial
contouring specialists:
Stephen M. Rouse, M.D., F.A.C.S.
Jerilyn S. Allen, M.D.
William T. Culviner, M.D., F.A.C.S.

Call for a consultation **886.6610 ext.33**
www.thecenterforfacialcosmetics.com

Norwich Colchester Willimantic

PROTECTING THE WILDEST JUNGLES ON THE PLANET.

MAIN STREET. PRESCHOOL. THE PLAYGROUND. The environment isn't just some far off place. It's the lawn under our feet, the food on our plate, and the air we breathe. To learn more, go to NRDC.org. And help protect the jungle creatures in your backyard.

Because the environment is everywhere.





PROGRAM NOTES

Welcome to *Camelot!*

At Goodspeed, we are proud of our ability to transport our audience into a unique and magical world. With the help of our creative teams and staff, Goodspeed Musicals endeavors to bring you a completely unique show, even when it would be easier to simply mimic what has been done in the past. King Arthur was guided by his principles as well when he envisioned a utopia in which everything happens according to plan:

Alas, but in real life things don't always happen as expected. Unfortunately, there were many obstacles and several tragic circumstances in bringing *Camelot* to Broadway. Adrian Greenburg, the famous motion picture costume designer, died of a heart attack after finishing less than half of his work on the production. Moreover, Alan Jay Lerner (book and lyrics) became ill two months before rehearsal was scheduled to start. Then, when the show opened in Toronto, it lasted more than four hours due to extraneous material. After that opening, Lerner spent ten days in the hospital. Upon Lerner's return to work, Moss Hart (director) promptly suffered a heart attack and was unable to see the show again until it had been running on Broadway for over four months. According to Lerner, "*Camelot* on Broadway became known as a 'medical' more than a 'musical'."

Another terrible event loomed in *Camelot's* future and for a number of reasons; it gradually became synonymous with one of the most tragic and shocking stories in American history. On November 22, 1963, President Kennedy's assassination traumatized the nation and cut short the presence of one of our greatest leaders. In recent times, the legacy of *Camelot* and its connection to the Kennedy administration continues to resonate with the American people.

Despite past and future malady, after being rewritten and restaged, *Camelot* opened on Broadway on December 3, 1960. At that point, Alan J. Lerner and Fredrick Loewe (music) were already enjoying great success with their musical *My Fair Lady*. In fact, some would argue that *My Fair Lady* raised the bar too much and negatively impacted *Camelot's* sales once it opened. Many theatergoers and critics actually projected that it would close before *My Fair Lady*. This was almost the case because *My Fair Lady* closed on September 29, 1962, and *Camelot* ended its run on January 3, 1963.



Robert Goulet, Julie Andrews, and Richard Burton in the original Broadway production of *Camelot*

Despite the mixed reviews and the difficult journey to New York City, the box office was overwhelmed with the largest advance ticket sales in Broadway history. Lerner explains: "The highest expectations of the season, however, were reserved for *Camelot*, the first show by Fritz and me since *My Fair Lady*, with several former associates, namely director Moss Hart, choreographer Hanya Holm, and starring Julie Andrews. Her co-star was Richard Burton. Fritz and I had been away from the theatre for four years, during which time we had written the screenplay, music and lyrics for the film *Gigi*. Because *Gigi* was not only successful, but won more Oscars than any film in history up to that time, and because of *My Fair Lady*, the advance sale for *Camelot* was monumental."

After opening on Broadway however, ticket sales were not impressive and CBS was projecting that the show would close in May of that year. However, the production had its big break when Ed Sullivan invited Lerner and Loewe to be featured for one hour on his television program. The special occasion was the fifth anniversary of *My Fair Lady* and Sullivan permitted Lerner and Loewe to choose the format of the program. Lerner and Loewe used that opportunity to feature all the best songs and scenes from *Camelot*, including much of Moss's vastly improved changes to the show.

Lerner recounts: "The following morning I was awakened by a phone call from an excited manager at the Majestic Theatre. "You better come down here," he said, "and look at this." "Look at what?" I asked. He answered, "Just come and see what's going on at this box office." I got to the theatre as quickly as I could. For the first time there was a line halfway down the block. That night the audience came to the theatre and saw the vastly improved musical that Moss had rehearsed the week before. And at eleven-fifteen the curtain came down! The reaction and the applause were overwhelming. The people came up the aisles raving. *Camelot* was finally a hit."

The legend of *Camelot* endures in the collective mind of our nation and *Camelot* the musical deals with issues that remain extremely relevant. Together and as individuals, we continue to strive for our own fleeting *Camelot*. It is our hope that we can provide a glimpse of that magical place on our stage for you to enjoy.

By Joshua S. Ritter



HISTORY OF THE GOODSPEED OPERA HOUSE

The Goodspeed Opera House has endured as a majestic presence on the Connecticut River since it was built in 1876 by William H. Goodspeed, a shipping and banking magnate and avid theatre lover. Since that time the Opera House has lived two lives: the first as a bustling center of commerce, housing a theatre, professional offices, steamboat passenger terminal and a general store; and the second, after a period of neglect and deterioration, as a magnificent professional musical theatre fully restored in 1963 to its original splendor.

Goodspeed's history goes back to its opening night on October 24, 1877, when a repertory group presented the comedy *Charles II* and the farces *Box and Cox* and *Turn Him Out*. Featured performers of the day were brought to East Haddam by steamboat, many directly from theatre in New York.

After William Goodspeed's death, the theatre was eventually sold and used as a storage depot for the State Highway Department. The building was marked for demolition in 1958, but local preservationists became interested and in 1959 The Goodspeed Opera House Foundation was organized to restore and reactivate the theatre. With the cooperation of the State of

Connecticut and the support of donor-members, the Goodspeed Opera House was restored and rededicated on June 18, 1963, with the opening of the musical *Oh Lady! Lady!!*



The Goodspeed Opera House in the 1880s.

GELSTON HOUSE

FINE DINING + AMERICAN BISTRO



Fine Dining with unparalleled views of the Connecticut River

Call now to book your special event

8 Main Street • East Haddam

860.873.1411

www.gelstonhouse.com

Next to the Goodspeed Opera House



ABOUT GOODSPEED MUSICALS

Goodspeed Musicals was first formed as The Goodspeed Opera House Foundation in 1959 to restore the 19th century Goodspeed Opera House as a professional theatre. Under the direction of Michael P. Price since 1968, Goodspeed has achieved acclaim as the home of musical theatre. Mixing classics by the Gershwins, Cole Porter and Jerome Kern with the very best of this country's newest musicals, such as *Annie*, *Man of La Mancha* and *Shenandoah*, Goodspeed pioneered the practice of rethinking, restoring and revitalizing America's musical theatre heritage.



The cast of *42nd Street*, 2009

Goodspeed Opera House

Dedicated to the preservation and advancement of musical theatre, Goodspeed produces three musicals April through December on its mainstage in East Haddam. Nineteen Goodspeed productions have gone on to Broadway, receiving more than a dozen Tony Awards. Goodspeed itself has been awarded two Special Tony Awards, one in 1980 for outstanding contributions to the American musical and a second in 1995 for distinguished achievement for a regional theatre.

Located in rural East Haddam on the Connecticut River, the historic Victorian-style Opera House takes musicals from the past and brings them to life for today's audiences.

New Musicals at The Norma Terris Theatre

Goodspeed is at the forefront of shaping the future of musical theatre. At The Norma Terris Theatre, located in nearby Chester, Goodspeed develops new musicals and nurtures emerging artists. Goodspeed has launched over 50 musicals into the theatre world at The Norma Terris Theatre, giving composers and authors the opportunity to develop their material through actual production. Audience response is a vital part of this theatre. Regular input is actively sought through "Talkback" discussions with the creative staff, giving audiences the opportunity to play a part in creating a new musical.

The Scherer Library of Musical Theatre

The Scherer Library of Musical Theatre is integral in perpetuating our national musical heritage. The Library preserves scores, sheet music, scripts, original cast recordings, playbills and theatre memorabilia. In addition to making this collection available for study and research, the library provides the Goodspeed creative staff with original source material to assist in the faithful re-creation of musicals.

The Max Showalter Center for Education in the Musical Theater

Goodspeed Musicals recently established The Max Showalter Center for Education in the Musical Theater. The Center encourages and nurtures musical theatre artists and students by providing a unique and comprehensive array of training and educational programs to serve both the national and local academic communities. As a part of that mission, the Center conducts the annual Goodspeed Musical Theatre Institute in collaboration with New York University's Tisch School of the Arts and The Hartt School at the University of Hartford. In addition, it offers education pages on Goodspeed's website, allowing visitors to further participate in and appreciate the rich and vibrant world of musical theatre. For more information, please call Education Director Joshua S. Ritter 860.873.8664, ext. 745.



WILLIAM H. GOODSPEED LEGACY SOCIETY

Honoring Those Who Have Made a Commitment to Provide for the Future of Goodspeed Musicals

By remembering Goodspeed through a planned gift, you can ensure that your legacy of support, so important to our production of highest quality musical theatre, continues for future generations. The William H. Goodspeed Society was created to recognize those who have included a future bequest to Goodspeed in their wills or estate plans.

Anonymous (6)

Leonard Blake

Edward and Ruth Cape

Michael Chaiklin

Richard Goodman

Norwick R. G. and Elizabeth Jane

Goodspeed

Martha D. "Pepper" Hitchcock

Mr. and Mrs. Robert P. Jones

John Kartovsky

Ruth Katz

Dorothy Liepertz

Andrew C. McKirdy

Leslie and Lynne Nathan

The Maryann and Jane E. Ondovcsik

Fund for the Preservation of the

Victorian Goodspeed Opera House

Peter and Janet Otto

Michael and Jo-Ann Price

Barbara V. Ross

Dr. Anne L. Rothstein and

Ms. Jane Hellman

Richard and Mary Schneller

Mark and Roberta Velez

Goodspeed Musicals Funds and Endowments

The funds and endowments listed below were established during lifetime, by bequest, or in memoriam with an outright gift to Goodspeed Musicals.

The Arthur and Elizabeth Godbout Fund for the Support of the Music Department

The George S. and Charmian A. Goodspeed Memorial Fund

The A. Nicholas Groth, Ph.D. Charitable Gift Annuity*

The Richard G. and Elizabeth F. Kehoe Charitable Gift Annuity*

The Adrienne I. Koch Revocable Trust

The Charles R. Lindberg Family Fund

The Salvatore Marzano, Jr. Memorial Student Scholarship Fund

The Elaine McKirdy Intern/Apprentice Endowment

The Estate of Rochelle Richilson for the support of Goodspeed Musicals

The Charlotte and Gerald Sandler Educational Endowment

The Scherer Library of Musical Theatre Fund

The Max Showalter Center for Education in the Musical Theater

The Ashton M. Tenney, Jr. Memorial Annuity Fund*

The donors receive an income stream during their lives and a named fund or endowment will be created when the annuity reverts to Goodspeed Musicals. For further information on how you can ensure your legacy of support with a Planned Gift to Goodspeed Musicals, please contact Gloria Gorton, Director of Major Gifts, PO Box A, East Haddam, CT 06423, 860.873.8664, ext. 366 or e-mail gloria.gorton@goodspeed.org.

Special Gifts

Goodspeed Musicals is grateful to those who have made a special gift during the 2009 season. They include:

Suzanne and Donald Joffray

Benjamin B. Liveten Charitable Grand Nephew Trust

Carol Sirof

Memorial Gifts

In Memory of Leonard Blake, given by The Goodspeed Guild and Nancy L. Planeta

In Memory of Marie Dombroski, given by Merle and Ron Bernstein

Goodspeed Members:

Learn more about *Camelot* in the latest issue of *Curtain!*, our members magazine.

Not a Goodspeed Member? Join now and take advantage of this and other member-only benefits!

Contact Member Services

860.873.3414

membersmatter@goodspeed.org



THE GOODSPEED OPERA HOUSE FOUNDATION

The Goodspeed Opera House Foundation, chartered by the State of Connecticut as a charitable, educational, non-profit organization, is charged with the responsibility of maintaining the Goodspeed Opera House both as a historic landmark and as a living theatre. The objective of the Foundation is the establishment and development of a nationally recognized regional theatre of which its members and supporters can be justly proud.

2009 BOARD OF TRUSTEES

Francis G. Adams, Jr.
John Barlow
Myron R. Bernstein*
David W. Bogan
J. Robert Buchanan, M.D.
Theodore S. Chapin
Kay Knight Clarke
Alvin Deutsch
Christopher J. Dodd
Robert B. Friedman
Norwick R. G. Goodspeed**
Helen Gray
John H. Hamby
Jeffrey S. Hoffman
Lynde S. Karin
John S. Kartovsky**
Mary Ellen Klinck
Mark Masselli
F. Patrick McFadden, Jr.
Lawrence McHugh
Robert Roy Metz*
Robert F. Neal
Eric D. Ort
Muriel S. Paris
Michael P. Price
Susan Scherer
Richard F. Schneller**
H. William Shure
DeRoy C. Thomas
Mark Wainger
John F. Wolter
Dona D. Young

**Emeritus Trustee*
***Honorary Trustee*

OFFICERS

M. Jodi Rell, *Ex Officio*
Honorary Chairman
DeRoy C. Thomas, *Chairman of the Board*
Francis G. Adams, Jr., *President*
Jeffrey S. Hoffman, *Vice President*
Dona D. Young, *Vice President*
Eric D. Ort, *Secretary*
Mark Masselli, *Treasurer*
McLaughlin & Stern, *General Counsel*

PAST PRESIDENTS

Marian D. Terry
Muriel W. Selden +
Bernard Knollenberg
Noel M. Davis +
Hal James
Beatrice H. Rosenthal +
Alan C. Davis
Noel B. Gerson
John H. Hamby +
Norwick R. G. Goodspeed +
Richard F. Schneller +
Robert F. Neal +
DeRoy C. Thomas

+ *also served as Chairman of the Board*

GOODSPEED COUNCIL

Carol Adams Dahlke
Rod Duxbury
Ilia M. O'Hearn
Leonard H. Suzio
Marty Travis
William F. Turner

THE SCHERER LIBRARY OF MUSICAL THEATRE AT GOODSPEED

The Scherer Library of Musical Theatre at Goodspeed perpetuates our national musical heritage through the careful preservation of vital performance materials: scores, sheet music, scripts, original cast recordings, playbills, and theatre memorabilia. Its efforts are enhanced by the support of the Library Advisory Board. The Library owes its existence to the generosity of those who have contributed their personal collections and it gratefully accepts materials related to musical theatre.

2009 LIBRARY ADVISORY BOARD

Ken Bloom
Theodore S. Chapin
Alvin Deutsch
Brian Drutman
David Hummel
Michael A. Kerker
Robert Kimball
Bruce Pomohac
Bill Rosenfield
Henry S. Scherer, Jr.
Steven Suskin

THE MAX SHOWALTER CENTER FOR EDUCATION IN THE MUSICAL THEATER ADVISORY BOARD

Gordon Greenberg
Robert R. Metz
Jane Percy
Peter Walker
Nancy Wolf



GOODSPEED MEMBERSHIP

*Did you know that your ticket price covers less than 60% of the actual cost of our performances? You might think of it as getting everything after intermission **FOR FREE**. More accurately-everything in the second half of the production is made possible by the generosity of Goodspeed contributors.*

THANK YOU, Goodspeed Members! Goodspeed is over 7,000 members strong – for a complete listing, please visit our website at www.goodspeed.org.

As of June 26, 2009

MARQUEE PARTNERS

FOUNDING PARTNER (\$25,000)

Lucille and Dave Viola, Sr.

INVESTING PARTNERS (\$10,000)

*Mr. and Mrs. Francis G. Adams, Jr.

*Richard T. Cersosimo and Valerie J. Koif

Mr. and Mrs. Jerry K. Day

Steve and Sharon Finger

Mr. and Mrs. Gerald Lazar

Michael and Jo-Ann Price

Mr. and Mrs. DeRoy C. Thomas

Dona and Roland Young

EXECUTIVE PRODUCING PARTNERS

(\$7,500+)

Robert A. and Nancy J. Franco

Suzanne and Donald Joffray

ARTISTIC AND TECHNICAL

PRODUCING PARTNERS (\$5,000+)

Dr. and Mrs. J. R. Buchanan

Alice Dadourian

Mr. and Mrs. Harry J. Gray

Mr. and Mrs. William Haber

The Kitchings Family

Catherine Ladnier and J.M. Robinson

Ruth Lord

Anthony and Chelsea Michaud

*Regina and Robert F. Neal

Mrs. Peter E. Paris

Saul and Hila Rosen

Dr. Anne L. Rothstein and

Ms. Jane Hellman

Ted and Vada Stanley

Mr. and Mrs. Angelo Tomasso, Jr.

Leanne F. Trout

*Mark Wainger and Charles Taylor

ASSOCIATE PRODUCING PARTNERS

(\$2,500+)

Sandra Anagnostakis

Charles Beach Barlow

John Barlow and Scott Rudin

Frank and Amy Campbell

Sally and Ted Carrier

The Christine E. Moser Foundation

*Kay Knight Clarke and Logan Clarke

Mr. and Mrs. Walter W. Congdon

Mr. and Mrs. Robert F. Coviello

Alvin Deutsch

Bill and Denise Feeley

Sandy and Bob Friedman

Reginald H. Fullerton, Jr.

Scott D. Furman

William J. Ginnetti, Sr.

The Harry E. Goldfarb Family Foundation

Mr. and Mrs. Ronald Goodspeed

Mr. and Mrs. Norwick R. G. Goodspeed

John and Joanna Hamby

Ms. Heather Henson

Nancy and Jeffrey Hoffman

Lynde S. and Michael Karin

Mr. and Mrs. Robert H. Lewis

Jack Light

Mr. and Mrs. Charles R. Lindberg

Thomas Fynan and William Loutrel

Timothy and Sharon Lynch

Mark Masselli and Jennifer Alexander

Mrs. Robert R. Mathews

Mr. and Mrs. George J. Michel, Jr.

*Mary and Elliott Miller

Mr. and Mrs. John J. Nyikos

Eric Ort and Duff Ashmead

Donald G. Reed

Lt. Col. Robert A. Riddlehoover

Peter and Betsy Russell

Dr. and Mrs. Gerald Sandler

Mr. and Mrs. Henry S. Scherer, Jr.

Donna and Bill Stamm

Sorenson-Pearson Family Foundation

Mrs. Ashton M. Tenney, Jr.

Carl and Jessica Thompson

Thomas F. Tyseck and Marie V. Morosky

Muriel and Karl Fleischmann

Raymond J. Fontana

Samuel S. Fuller

Zelda and Charles D. Gersten

Betty Gilman

Lea and Dick Goodman

Roger C. Goodspeed

Gordon D. Gross

Hattie and Terry Guin-Kittner

Ron and Nina Harris

Al and Judy Heinke

The Hermann Family Charitable

Foundation

Mrs. Harold William Higgins

Betty Ruth and Milton Hollander

Mr. and Mrs. Arthur Alfred Hulse

Mr. Penfield Jarvis

*Mr. Edward T. Kask

Susan and Peter Kelly

Ted and Kiki Kennedy

Mr. and Mrs. Simon Konover

*Nicholas T. Lemesh

Robin Lewis and Robert Rich

Warner and Deanna Libby

Mr. and Mrs. F. P. McFadden, Jr.

Larry and Patty McHugh

Robert Roy and Susan Metz

Service Station Equipment Inc.

Denis F. Mullane

Thomas and Karen Murphy

Peter Johnson Musto

Mr. and Mrs. Bruce M. Newman

Mr. and Mrs. David Ogden

Mr. and Mrs. James Olson and Family

*Jane E. Ondovcsik

Larry and Martha Parks

Raymond and Marlene Piche

Sam and Phyllis Pierson

Willard and Sigita Pinney

Michael W. Porter, Jr.

Racine Company

Chuck and Dianne Ramsey

J. Rosenkrantz and M. Cohen

*Diane M. Rottmann

Dr. and Mrs. Jaime Santamaria

Mrs. Benjamin Schilberg

Richard and Mary Schneller

*Mr. and Mrs. William B. Seaver

Fred and Carol Seeman

Mr. and Mrs. Allyn Seymour, Sr.

Mable and Richard Seymour

Mr. and Mrs. Martin C. Shapiro

Mr. and Mrs. H. William Shure

Jerome and Marian Silverstein

Richard Stapleton

Henry Skip Steiner

Beatrice Stokes

Mr. and Mrs. William J. Stolba, II

Mr. and Mrs. Emil Tillona

Donald and Sharyn Timmerman

Michael and Florence Timura

THE PRODUCER'S CIRCLE

PRODUCERS (\$1,000+)

Anonymous (1)

Mr. Daniel Adams

General and Mrs. Elliott B. Alter

*Dolores L. Andrew

Mr. and Mrs. Joseph E. Arborio

Greg and Joyce Barabas

Mr. and Mrs. Barton M. Bauers, Jr.

Maxwell and Sally Belding

Mr. Spencer Berger

Mr. and Mrs. Bruce L. Blakeslee

David W. Bogan and Heather Hunt

Michael Bragulla

In Memory of Kay McGrath

Florence L. Carples

*Mr. and Mrs. Terry W. Chabot

Creative Transportation

The Cheryl Chase and Stuart Bear

Family Foundation

Mr. and Mrs. Gordon U. Cobleigh

Maury and Sonia Cohn Foundation

Karen and Michael Cormier

Terri and Don Coustan

Mrs. J. Noyes Cray

Mr. and Mrs. Donald Daren

Debra and Steven Daren

Mr. and Mrs. David W. Dangremond

Bill and Doris Davis

William and Christine Donohue

Mrs. Nathan L. Dubin

Mr. and Mrs. Bruce M. Dutch

Mr. and Mrs. Robert K. Erf

Mr. and Mrs. J. Richard Farley

Fran and Phil Feltman



GOODSPEED MEMBERSHIP

Gertrude Tyrol
Arthur E. Webster, Esq.
Mr. and Mrs. Samuel J. Weinhoff
RADM. Louise C. Wilmot USN (Ret.)
and James E. Wilmot
Ms. Nicole L. Elkon and
Mr. Neal S. Wolin
Jef and Kate Wolter
Ferne and Peter Youmans
Mrs. Valentine Zahn

ASSOCIATE PRODUCERS (\$500+)

Anonymous (4)
Sandy and Dave Adams
Mrs. Ronald F. Agostini
Fred and Roberta Allardyce
Robert C. Alwine
Billie and Peter Anker
*Ed and Eileen Annino
Mr. and Mrs. John C. Arena
Mary B. Arnstein
Bette and Bruce Avery
Mrs. Jack Axelrod
Sherri and Scott Baggett
*Mr. and Mrs. Ray Barker
Cynthia Bates and Jonathan Russell
Mr. and Mrs. Edwin L. Baum
Denise Bernardo and Edwin Muentes
Merle and Ron Bernstein
Bishopsgate Inn
Mr. and Mrs. Curtis L. Blake
Alan Blanchard
*Dr. and Mrs. Richard F. Bloom
*Mr. and Mrs. Gustaf R. Bodin
Jan and Ron Bogdan
Kenneth and Judith Boudreau
Stephanie M. Branta
Nadine and Robert Britton, III
Helen Babcock and Tom Buttacavoli
S. E. Canaday, Jr.
Paul C. and Patricia B. Carlson
*Michael and Barbara Cerrina
Mr. Michael Chapin
Colchester Mill Fabric
Mr. and Mrs. Richard Chiaramonte
Anne and Gabe Choquette
Barbara L. Clark
Scott and Jo Cleary
Mr. and Mrs. Charles A. Clinton
Marilyn and Ted Colvin
Lynette and Linc Cornell
Donald and Sandra Costantino
Omar Coffee Company
Michael and Peg Curtis
Mr. Daniel Hechtman and
Ms. Danielle Danese
Joel N. and Ruth Ann C. Davis
Dr. and Mrs. Arthur C. DeGraff, Jr.
*Chuck Dell
Brian and Linda Dewhirst
*Roy and Betsy Dickinson
Betty Dove
Herbert Drower
Mary Jane Dunn
Jean W. Earle
The Eastland Family
Dr. and Mrs. John R. Eddy
Gene and Vera Ehnen
Jim and Judi Elder

Mr. and Mrs. Michael Elgee
*Frederick Elia
Gloria and Martin Feibish
Dr. and Mrs. Brendan M. Fox
Dr. James Frost
Avery and John Funkhouser
Barbara A. Ghabianelli
Rona Gelber
Judi and Albert Glassenberg
Gloria J. Gorton
*Mr. and Mrs. Mark B. Gossner
*David and Patricia Hadlow
Newell and Betty Hale Fund of
Greater Worcester
Mr. and Mrs. Burt Hallisey
*Richard B. Hanrahan
Al and Betsey Harris
Hastings House Antiques
Brian and Karen Henderson
Sue Hessel and Karen Dahle
William Hewitson
*Claudette, Ned, Maeve and Ciara
Prudence Hoffman
Diana and Paul Hughes
James and Isabel Jackson
Barbara and Ray Jacobsen
Mr. and Mrs. Scott Jezek
Lisa B. Walker & Robert Kaplan
John S. Kartovsky
Mr. and Mrs. Douglas E. Kehl
Sallie L. Kemp
Steven and Deborah Kleinman
Ronald Klimas
Mary Ellen Klinck
*Kenneth Koe
Hans and Christina Koehl
Abbey and Stephen Kreinik
Darlene F. Krenz
Frank and Elisabet Landrey
Dr. and Mrs. Robert E. Lebson
Mr. and Mrs. David A. Lentini
Roger and Carla Levins
Barbara and Ira A. Levin
Mr. and Mrs. Brian Liistro
Jean and John Linderman
Dr. and Mrs. Koen Loeven
Peter and Rosemary Lombardo
Mary Kay Long and Dennis F. Unites
Phyllis and Ray Losnes
Mr. and Mrs. Arthur Lovell, Jr.
Joseph G. Lynch
Mr. and Mrs. Robert J. Lyons
Mr. and Mrs. William C. Lyons
Douglas R. Magee, Jr.
Dr. Clare Manzi and
Dr. Vincent Williams
Mr. and Mrs. Thomas Marra
Robert K. Mason
Ken Maxwell and Arlene Tunney
*Joseph and Nancy Mazza
Jay McAnally
McCarty & Sons
John and Amy McCauley
Andrew and Bonnie Lee McKirdy
Mrs. John F. McManus, III
Mr. and Mrs. James J. Melo
Tom and Mary Miett
Sandra Milles
Francis J. Morison

Kevin Murphy
Dr. and Mrs. Thomas J. Murphy
Robert and Carolyn Nelson
Naomi and Jerry Neuwirth, M.D.
Mr. Leo Nevys
David I. Newton
Allen J. Novakouski and Daniel J. Hutton
Brian O'Brien
Mr. and Mrs. G. Robert O'Brien
Mr. David Ogden
William Orsini and Walter Smith
*Loren and Elaine Otter
Dr. and Mrs. John Paardenkooper
*Peter and Candace Pappas
R.A. Parady & Sons, Inc.
*Ron and Carla Pariser
Lyn Mathews Perrin
*Mr. Rolf Peterson
Rod and Lucy Petrey
Dag and Nancy Pfeiffer
Beverly and Brian Platner
C. L. and Rosina Raiteri
Thomas Redmerski
Mitchell and Lorraine Rochefort
Eric and Sandra Rustici
John and Fran Sadek
Marilyn Safenowitz
Jane and Morley Safer
Patricia and Andrew Salner
Mr. and Mrs. Jacob Salzman
Dorothy and Peter Samuels
Susan and Russell Santora
Mary and Joe Sargent
Dr. and Mrs. Lee Sataline
Linda R. Savitsky and Alvin G. Wolgram
Dr. and Mrs. Stephen Scarangella
Linda and Philip Scheffer
Daniel W. and Sandra B. Schneider
Dr. and Mrs. John Schowalter
Jack and Bonnie Scott
Steven R. Senter
Fred and Barbara Sette
*Karen and Ailyn Seymour
Richard and Barbara Shaffer
*Thomas J. Shakun
Mr. and Mrs. Edward J. Sharr, Sr.
Mr. and Mrs. Thomas Shea
*Katy and Frank Sherer
Mr. and Mrs. Anthony Shetensky, Jr.
Louis and Tracy Shoor
Stuart and Arline Small
Lon and Susan Smith
Sara Sparrow
Rolf and Sioux Stacy-Olson
*Richard D. Stapleton
Mr. and Mrs. Chris M. Steele
Josephine Merck and James Stevenson
Suzio/York Hill
Mr. and Mrs. Edward C. Swift
Dr. and Mrs. Russell Sylvester
Jennifer Shinn and Russell Tait
Stewart Taubkin
Judy B. Taylor
*Joe and Eunice Thomas
*Kathleen Thompson
David and Laurie Title
*Sheila L. Tomlinson
*Mr. and Mrs. Paul Tracey
Edwin B. Tuthill, Jr.



GOODSPEED MEMBERSHIP

Mrs. Arthur D. Van Winkle
Jean B. Vogel
Mr. and Mrs. Russell Waldo
Judith and Steven Warner
Patti and Howard Weiner
Leslie and Richard Weinstein
Victoria and William Winterer
Haggett, Longobardi LLC
Symond and Martha Yavener
*Mr. and Mrs. Robert Yudkin
*Eleanor E. Zajac
Dr. and Mrs. Robert Zavod
Nancy and George Zitnay
*Mr. and Mrs. Peter R. Zucco

DIRECTOR'S SOCIETY (\$250+)

Anonymous (7)
Claudia Abercrombie
Richard and Merrill Adams
Seth and Katey Adams
Taggart Adams
William D. Addison, Jr.
Barbara Agar
Dr. and Mrs. Sultan Ahamed
Howard J. Aibel
Rose M. Allen
Mary Allingham
Karen and Norman Alterman
Phyllis and Vincent Amato
Ray Gaulke & Sydney Anderson
Mr. Glen Andrews
Dr. and Mrs. C. Wallace Andrias
Paul and Christine Antaya
Charles J. Anthony
Martha Atkinson and Deborah Lyon
Mr. and Mrs. William G. Atkinson
Mr. and Mrs. Hillel J. Auerbach
Robert Babcock
John, Nancy and Nikki Baccaro
*Paul, Cinda, Jay and Sam Barbuto
Michael and Shelley Barker
*Mr. and Mrs. David N. Barry
Mr. and Mrs. Edward D. Barry
Myrna Baskin
Michele and Sherman Baumann
Cynthia and Allen Beavers
Deborah Beebe
Debra and John Bekish
David A. and Alice C. Belden
Mrs. Ellen W. Bell
Gary and Ruth Benanav
Rande and Martin Berliner
Lynette Bester and Family
Donald Bidwell
Joseph and Kerry Biega
Barbara and Barton Bienenstock
Mr. and Mrs. J.P. Bischoff
James Blackburn
G. Howard Blythe
Wallis and Laurie Boyd
Don and Susan Boyle
The Bradford Family
Attorney and Mrs. Peter F. Brady
*Liliane T. Bramer
*Gordon W. Braudaway
William and MaryEllen Bridges
BrandTech Scientific, Inc.
Joyce and Harold Buckingham

Eugene and Ann Buckley
Eileen Buckley
Mr. and Mrs. John F. Budd, Jr.
*Carla and Richard Bue
Frank and Shari Bugaj
Peter S. and Sally R. Burgess
Mr. and Ms. Robert Butkus
Edward Cape
Anne and Jim Carroll
Robert and Carole Carter
*Leon and Marilyn Case
George and Frances Caspar
Greg and Melinda Castanza
Michael Chaiklin
Theodore S. Chapin
Ms. Karen Chase and Dr. Charlie Dickson
Richard O. Cheney
John and Rosanna Chidsey
Kyung H. Chung, M.D.
Jack and Bertie Chuong
Robert E. Cienian
*Janet and Tim Clark
Peter and Marcelyn Clarke
Marshall Cohn
Philip and Clio Coles
Andrew and Elizabeth Comcovich
Dr. and Mrs. Michael M. Conroy
Gloria K. Corbit
Gary and Carol Corliss
Cornerstone Construction Services, Inc.
Holly and Steven Craig
Mr. and Mrs. Cynl Crocker
Dr. Amy Crockett
Mr. and Mrs. Samuel D. Crum, Jr.
Joan K. Curry
Henry F. Curtis
Michael and Gail Cutler
Eric and Patricia Daniels
Eric Dawicki
Stanley K. Dean
Deborah Dembo
*Mr. Eugene Dessureau
Sherrie Deveau
*Linda W. DeYoung
Arthur and Edythe Director
Mrs. Martha Dobruck
Mr. Jonathan Dodd
Mr. Steven Dodd
John and Pat Doolittle
*Dr. and Mrs. John E. Dreslin
David and Deborah Dressler
Herbert Duey
Laura and James Duncan
Rose and Louis Dunlap
Mary Jane Dunn
*Mr. and Mrs. David R. Edwards
Jim and Judi Elder
J. Andrew Engelhardt
Mrs. Carol Engle
Eloise Epstein
Mrs. Florence R. Ergin
Jon and Anna-Lena Estes
Mr. David Fallon
Jackie and Bill Falman
Michael F. Farina, Jr.
Rhoda and Arthur W. Feinstein
Ann Field
Earle Finch

EMCOR Services -
New England Mechanical
Dr. and Mrs. William Fitzgerald
David and Judy Fleischer
Lynne and Richard Fletcher
Brenda and Chad Floyd
Frances Forde
*Janet M. Forgey
Mr. and Mrs. Raymond Fornwald
The Honorable and
Mrs. Frederick A. Freedman
Eula and Glenn Freshch
Frank Frey
Donna and Ed Fuhman
Ms. Mary E. Gabriele
Dr. and Mrs. Gregory J. Gallivan
Cleveland W. Gardner
The Reverend and
Mrs. Ronald S. Gauss
Carol and David Geyer
Rick Gibbons
Mario S. Gioco, CPA
Wil and Mary Ellen Gladue
Elizabeth D. Godbout
Mr. and Mrs. Samuel Golding
*Dr. and Mrs. Donald Gonci
Dr. and Mrs. Lawrence Goodman
Francis M. Gordon
Mr. and Mrs. Malcolm Graff
Ray and Judy Grasso
Bill Gratz and Jay Bruno
Carole and Harold Greenbaum
*Mr. and Mrs. Michael Groenhout
*Mr. and Mrs. Roger Gross
Peter and Barbara Guerra
Mr. and Mrs. Robert P. Haff
Mr. Stephen Hahn
Mark and Julie Haight
Dr. and Mrs. John J. Haksteen
Bill and Paula Harkins
Mr. and Mrs. Arthur H. Harris, Jr.
Dwight and Pat Harris
Sue Hart
Michael Hassam
Pat and John Hechavarria
*Mr. and Mrs. Donald P. Henry
Sandra S. Hewitt
T. Donald and Helene Hirschfeld
Betsy Sage and Stephen Hitriz
George and Joan Hogan
Mr. and Mrs. Robin Honiss
Paul Horoschak
Ms. Deborah Horton
Barbara and John S. Hubbard
Alan and Ann Hughes
Mr. and Mrs. Leslie A. Hyatt
Daryl and David Ifkovic
Lou Blumenfeld and
Jacqueline Isaacson
Amy Jacques-Purdy and Brian W. Purdy
Mrs. Curtiss Johnson, Jr.
Hugh Jones
Stephen R. Jones
Irene Junge
John and Betty Kelly
Nancy Mattoon Kline
Michael J. Klingensmith and
Ruth A. Shields



GOODSPEED MEMBERSHIP

- Dr. and Mrs. Kort C. Knudson
George S. Koczon
Mrs. Walter O. R. Korder
Jerry and Bunni Korman
Dr. and Mrs. Steven Korn
The Kozliks
Max and Ruth Kuziak
Sheila Laing
Rev. Roger J. Lamoureux
Fred and Jo Langhoff
R.N. LaRosa Corp.
*Ken and Barbara Larson and
Thelma and June
Lance LaShelle
*Mary and George Laursen
Dr. and Mrs. Stanley Lavietes
Harmon and Elizabeth Leete
Jane Leibowitz
Mr. and Mrs. Terrence T. Lescoe
Coleman and Judie Levy
Mr. and Mrs. James Lianos
Lorraine Lieberman
Mr. and Mrs. Louis Loffredo
*Roberta and Joseph Lombardino
*Mr. and Mrs. William Longa
Karin and Thomas Longo
Ian and Sylvia Lucas
Lou Ludgin
Mr. and Mrs. Ian G. MacDonald
*Emanuel and Irene Makiaris
Mr. and Mrs. James M. Makuch
William Manafort
Anita and William Mancoll
Mr. and Mrs. John F. Mangold
Arthur and Elizabeth Maniatty
Attorneys Linda Mariani and
David Neusner
John T. Martick
Dr. and Mrs. Keith Martin
Mr. and Mrs. Jack Matava and Family
Mr. and Mrs. Frederick Maynard, Jr.
Donna McArdle
Kevin and Jean McCarthy
Paul and Jan-Gee McCollam
Virginia S. McCurdy
Phyllis McDowell
Mr. and Mrs. Victor McGrady
Jim and McIntyre
Mr. and Mrs. John McParland
Jacqueline and James McWilliams
*Mr. and Mrs. Ronald B. Meehan
Mary Miko and Joseph Migliaro
Mr. and Mrs. George B. Miles
*Alf Millard and Barbara Butler
John and Patricia Miller
Margie and Lance Minor
Meg and Scott Mokoski
Nancy O. Moreland
Thomas Moriarty
*Mr. and Mrs. Floyd A. Morley
Jan and Harold Moskowitz
Mr. and Mrs. Kenneth A. Munson
Mr. and Mrs. Stephen J. Negri
Andrew and Jodie Nevas
Gail and Anthony Newman
Matthew Newton Family
William Nivison
Mike and Gwen O'Connell
Daniel Offutt
*Arlene Oleksy
Cecil J. Olmstead
Alan and Joyce Ortner
Rea and Mary Ann Outman
Charles H. Owens
Mr. and Mrs. Paul Palmer
Carl and Alvyra Pavano
*William and Andrea Phinney
Patrick L. Pinnell
Chris and Beth Pitt
Angela and Tim Ploszaj
Mary and Lawrence Pocknett
Mr. and Mrs. Myron J. Poliner
Mark and Traci Polinsky
Steven and Halina Potter
Charles and Janis Potts
Mr. and Mrs. John F. Poutot
Annella C. Preble
Rev. and Mrs. Marsron Price
*Cathy and Jim Probolus
John and Georgette Quilter
*Kate and Steven Rakowski, CFA
John Reed
Dr. and Mrs. Howard L. Reuben
Mr. and Mrs. Jeffrey D. Robbins
Alix Rokita
Mr. and Mrs. Jerald K. Rome
*Richard and Pat Rosien
Gary Rounseville
Neil and Lynn Ruenzel
Ms. Maggi Ryan
Mary Anne and James Ryan
James Salvatore
Anthony and Rita Santostefano
Ron and Cleora Savitski
Ann P. Sawicki
Dr. Robert and Lindley Sawyer
David and Jane Schaiman
William J. Scheide
Yankee Courier Services
*Mr. and Mrs. Alan Schiff
Karl and Judy Schumacher
Mr. and Mrs. Stephen Schwartz
Thomas Schwenke, Inc.
Mr. and Mrs. Edward Scovel
*Kathryn Smith and Andrew Seddon
Ted and Mary Jo Shen
Sonia and Mark Shipman
Donald and Karen Shirer
*Francis and Lorette Simcik
John and Millie Simonzi
Mr. and Mrs. David Sloan
Mr. and Mrs. Lawrence A.
Smedberg
Jack Solan
*Alex and MaryAnn Stein
Joan and Tom Steitz
Joan and David Stewart
Tom and Bonnie Stone
*Steven Sudigala
*Ann Sullivan
John H. and Susan Sullivan
Mr. and Mrs. Kenneth Summerer
Carol Z. Sundlin
Michael Sundquist and
Laura Richardson
Mr. and Mrs. Richard W. Swan
Mr. Allyn F. Sweet
Charleen Taylor
Peter H. Taylor
Dorothy, Kathleen, Ann &
Arthur Thompson
Lincoln Thompson, Jr.
Mr. and Mrs. John M. Timken
Jean Titterington
Mr. and Mrs. James J. Toomey
Laura and Harold Trinkoff
Larry Trudeau
Neal Tuohy, Jr.
Henry J. Turco
John and Judy Turpin
Bruce C. Tuthill
Strelunkus Bohunkas
Ragged Rock Marina
Mr. and Mrs. Edward Voskowsky
Dr. and Mrs. Milton Wallack
Jerry and Linda Wanosky
Burton J. Warner
Michael and Ellen Wasyl
*Claire and Nick Weiler
Bob and Roz Weinstein
Ken and Cathy Welch
*Mr. and Mrs. Richard M. Wenner
Mrs. Donald Wheeler
Michael and Bridget Wheeler
David and Margaret Wilcox
Babs and Kate Wilkinson
*Dr. Richard and Brenda Williams
Mr. and Mrs. George W. Wilson
Mr. Frederick S. Winkley
Mr. and Mrs. Michael Wolchesky
Mr. and Mrs. Clifford Wood
Peter and Joyce Wortman
Mr. and Mrs. Richard I. Wrubel
William and Joan H. Wynne
*Jim and Mary Yanosy
March and Lorry Young
Dr. and Mrs. Francis W. Zak
Arthur Zieky and Bill Witkowsky
Mr. Richard Zilinskas
Dr. and Mrs. James Zwerneemann

At Goodspeed...

Members Matter!

Michele Baumann
Member Relations Manager, ext. 333

Shannon Robbins
Membership Secretary, ext. 332



GOODSPEED MEMBERSHIP

Goodspeed Musicals acknowledges the following corporations that have provided matching gift contributions for Goodspeed Members this season. Members with an asterisk () next to their names have received these donations from their employers.*

Aetna Foundation
American Express Foundation
American International Group, Inc.
Amica Companies Foundation
Argonaut Group, Inc.
AT&T Foundation
Bank of America
Chubb & Son
CIGNA Corporation
Diageo North America
Dominion Foundation
ExxonMobil Corporation
Gartner Matching Gift Center
GE Foundation
General Re Corporation

GlaxoSmithKline Foundation
The Hartford Courant
IBM
J.P. Morgan Chase Foundation
Johnson & Johnson
John Hancock
Lincoln Financial Group Foundation
Macy's Foundation
Mass Mutual Financial Group
The Meredith Corporation Foundation
Merrill Lynch
Mobil Foundation, Incorporated
New York Times Company Foundation
The Northrup Grumman Foundation
NRG Global

Pfizer
Pfizer Pharmacia
The Phoenix Companies
Pitney Bowes
Prudential
Saint-Gobain Corporation
The Stanley Works
Time Warner
Travelers Insurance Company
Unilever
United Technologies Corporation
Verizon
Wachovia

Goodspeed Musicals gratefully acknowledges the following staff for contributing to the 2009 Employee Campaign.

Anonymous (2)
William Addison, Jr.
Robert C. Alwine
Cinda and Paul Barbuto
Mr. and Mrs. Sherman D. Baumann
Linda Benson
Sara and Neil Breen
Michael and Lori Cartwright
Susan M. Cipriani
Mr. and Mrs. Timothy D'Amato
Jennifer O. Etheridge
Paulette Ganoe
Gloria J. Gorton

R. Glen Grusmark
Hattie and Terry Guin-Kittner
Elisa Hale
Donna Lynn and Jay Hilton
Kim Kane
Erica Largen
Shanna Lisitano
Mr. and Mrs. David Loffredo
Kristan McLaughlin
Dan McMahan
Mary Miko and Joseph Migliaro
Linda Misarski
Mr. and Mrs. Stephen Moore

Sarah Moulton
William Nivison
Michael O'Flaherty
Will Rhys and Nancy Kluck
John Riccucci
Mr. and Mrs. Jeffrey D. Robbins
Mr. and Mrs. Gerald Rucker
Samantha Scaniffe
Elizabeth Smith
Roger-Paul Snell
Beryl and Henry Thorpe
Babs and Kate Wilkinson



Become a fan of Goodspeed's facebook page to be the first to learn when we post news, video, and photos.



GOODSPEED MUSICALS STAFF

ADMINISTRATION

Harriett Guin-Kittner..... *General Manager*
 Edward C. Blaschik..... *Theatre Manager*
 Mary Miko..... *Associate Theatre Manager*

Lindsay Mamula..... *Assistant to Michael P. Price*

William F. Nivison..... *Director of Finance*
 Joanne D'Amato,
 Samantha Scaniffe..... *Accounting Assistants*

Caitlin Quinn..... *Director of Development*
 Sara Breen..... *Manager of Corporate and
 Foundation Relations*
 Gloria Gorton..... *Director of Major Gifts*
 Sue Cipriani..... *Development Operations Manager*

Dan McMahon..... *Director of Marketing and
 Public Relations*
 Lori A. Cartwright..... *Advertising Manager*
 Elisa G. Hale..... *Public Relations Manager*
 Diane Sobolewski..... *Official Photographer*
 Briana M. Bridgewater,
 Katie Griswold..... *Marketing Interns*

Michele R. Baumann..... *Member Relations Manager*
 Shannon Robbins..... *Membership Secretary*

Cinda Abercrombie Barbuto..... *Ticket Sales Manager*
 Elizabeth Diamond..... *Box Office Manager*
 Rachael N. Carlson..... *Assistant Box Office Manager*
 Roger-Paul Snell..... *Box Office Supervisor*
 Lynn Collins-Rucker, Madeleine Holly,
 Catherine Joseph, Shayne Lien,
 Shanna Lisitano, Susanne Rutledge,
 Barbara Wilkinson..... *Box Office Representatives*
 William Addison..... *Subscription Services Manager*
 Kevin Kane, Kim Kane,
 Linda Misarski, Louise Walsh..... *Subscription Services
 Representatives*
 Meg C. Chapell..... *Group Sales Manager*
 Tess Smagorinsky..... *Group Sales Intern*

Kristin McLaughlin..... *Company Manager*
 Kim Carr..... *Assistant Company Manager*
 Elisabeth Link..... *Company Assistant*

Joshua S. Ritter..... *Education Director/Librarian*
 Jeffrey Mays..... *Systems Administrator*
 Linda Benson..... *Receptionist*

Paulette C. Ganoë,
 Beryl W. Thorpe..... *House Managers*
 Barbara Ford, Kim Gowac,
 Brittany Halleck, Sarah Moulton,
 Lisa Marie Platt, Gwen Pond,
 Diane Rottman..... *Assistant House Managers*
 David Loffredo, Louie Loffredo,
 Pat Logan..... *Bartenders*
 Marilyn Rybak..... *Building Services Assistant*
 Edward Locke, Stephen Moore,
 Robert Myska..... *Building Services*

PRODUCTION

Jason Grant..... *Technical Director*
 Adam Goodrum..... *Assistant Technical Director*
 Chris Phillips..... *Master Carpenter*
 Tyler Donahue, Sean Gibbs,
 Rasta Gronback, Mike Sabourin,
 Nick Sanborn..... *Shop Carpenters*
 Danielle Taylor..... *Stage Carpenter*

Carla Tiezzi..... *Charge Scenic Artist*
 Laura Prengaman..... *Staff Scenic*

Ellen Lampros..... *Props Manager*
 Troy A. Junker..... *Master Artisan*
 Carrie Capizzano..... *Props Artisan*
 Patrice Escandon,
 Thomas Stephansky..... *Journeyman Artisans*
 Lou Fuchs..... *Props Carpenter*
 Aaron Peraza-Baker..... *Props Run Crew Head*

John Riccucci..... *Wardrobe Master*
 Isaac Gmrya..... *Wigs Artisan*

Jay Hilton..... *Lighting & Sound Supervisor*
 Jennifer Kiser..... *Master Electrician*
 L. Clay Little..... *Production Electrician*
 Jess Murphy..... *Production Sound Engineer*

Erica Largen..... *Assistant Production Manager*

Ian Schugel..... *Music Assistant*

Jennifer O. Etheridge..... *Costume Rental Manager*
 Dawn Barlow, Gail Fresia,
 MacKenzie Halpin,
 Susan McCann, Njaye Olds..... *Costume Rental Assistants*

FOR THIS PRODUCTION

Nick Eilerman..... *Assistant Director*
 Amy Clark..... *Associate Costume Designer*
 Leon Dobkowski..... *Costume Coordinator*
 Leah Loukas..... *Assistant Wigs & Hair Designer*
 Claire Johnson, Judianne Wallace,
 Hayley Walter, Britt Watts..... *Stitchers*
 Lee Micklin, Mary Spadoni..... *Production Assistants*
 Ben Eels, Greg McGuire,
 Alex Zinovenko..... *Electricians*
 James Stenberg..... *Music Copyist*
 Molly Sturges..... *Piano Technician*

Scenic Artists: Christine Botta, Andrea Goodwin, Brian Howard,
 Kristin Krause, Patti Lizotte, Christina Rainwater, Phyllis Tela,
 Julia Tarrant, Samantha Yaeger

Costume Construction: Margaret Carboneau, John Cowles,
 Carmen Gee.com, Roberta Hamelin, Brian Hemesath, Fred Longtin,
 Larry Vrba

Apprentices: Steph Charaska, Brianne Hiroya, Eric Miller,
 Sarah St. Onge, Christopher Steffan, Stephanie Thompson

Elaine McKirdy Student Apprentice: Alex Jainchill

Mohegan Sun Apprentice: Tonett Smith

William Ivey Long Costume Apprentice: Monica Johansson

Special Thanks

Alley Theatre, Bank Street Cobbler, Gillette Castle State Park,
 Hartford Stage

IN APPRECIATION

Goodspeed Musicals would like to thank the following for their contributions to our productions: all who volunteer their time and talents to Goodspeed, the Goodspeed Opera House usher staff, the Goodspeed Guild and Production Committees, Mae Wantanabe of ZCMI Flower Shop.



for your INFORMATION

BOX OFFICE HOURS:

Monday & Tuesday: 10 a.m. – 5 p.m.

Wednesday & Thursday: 10 a.m. – 8 p.m.

Friday & Saturday: 10 a.m. – 8:30 p.m.

Sunday: 10 a.m. – 7 p.m.

Box Office Telephone: 860.873.8668

Box Office E-mail: boxoffice@goodspeed.org

BAR AND GIFT SHOP:

The Goodspeed Porch Bar and Gift Shop, located on the main floor, are open one hour prior to performances and during intermission.

WEBSITE:

Visit our website at goodspeed.org to buy tickets 24 hours a day or learn more about upcoming and past productions at Goodspeed!

INFRA-RED HEARING SYSTEM:

The Goodspeed Opera House offers the Sennheiser infra-red hearing system to assist hearing-impaired patrons through the generosity of Carol Sirot. Free headsets are available from the box office.

SPECIAL SERVICES:

Goodspeed provides elevator service to the orchestra level of the Opera House. To avoid the steps in front of the theatre, please ask for a House Manager when you arrive. You will be directed to our elevator at street level outside the building. Handicapped parking is located in front of the Gelston House. If you require special assistance of any kind (for example, to remove a theatre seat to accommodate a wheelchair, early admittance to the theatre, or assistance getting to your seats), please inform the Box Office when you purchase your tickets.

PARKING:

Free parking is available to Goodspeed patrons. Turn right after the Gelston House when passing the theatre and free parking is on the right. A path along the river leads from the parking lot across a foot bridge to the theatre.



GOODSPEED GUILD:

The Goodspeed Guild is a volunteer organization dedicated to supporting Goodspeed Musicals' operations and productions. Since 1975 it has provided services to artists, patrons, and staff on a year-round basis, while offering its members the opportunity to become part of the behind-the-scenes activities at Goodspeed. To find out about volunteer opportunities that fit your interests and schedule, visit our website at goodspeed.org or contact Amy Campbell at 203.494.7328.

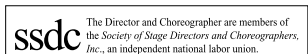
Sets, costumes, and props are designed especially for the Goodspeed Opera House and are built in Goodspeed Musicals' shops.

Goodspeed Musicals is a professional theatre operating under an agreement between the League of Resident Theatres and Actors' Equity Association, the Union of Professional Actors and Stage Managers in the United States. Orchestra members are represented by Middletown Musicians Protective Association, Local 499, American Federation of Musicians.

Goodspeed Musicals is a member of The League of Resident Theatres.



The scenic, costume, lighting and sound designers in LORT Theatres are represented by United Scenic Artists, Local USA-929 of the IATSE.





ACCLAIMED DINING
 AWARD-WINNING TAP ROOM
 ENTERTAINMENT NIGHTLY
 STUNNING WINE BAR
 CHARMING ACCOMMODATIONS

The **GRISWOLD INN**
 Since 1776

ESSEX, CONNECTICUT
 860.767.1776 • GRISWOLDINN.COM

Live Jazz
 Sunday
 Brunch

Catering for
 all occasions

Gabrielle's

Pre Theatre Dinner



78 Main Street
 Centerbrook
 CT 06409

860-767-2440
 www.gabrielles.net

Give us your ticket stub
 and enjoy a complimentary
 glass of wine with dinner
 or lunch.

WSHU

Public Radio Group
 National Public Radio®

Your Station for
NPR News & Classical Music

**NPR News &
 Classical Music**

WSHU-FM
 91.1 FM
 90.1 FM
 91.3 FM
 91.7 FM
 103.3 FM

NPR News & Talk

WSUF-FM
 89.9 FM
 93.3 FM
 105.7 FM

WSHU-AM
 1260 AM



www.wshu.org

WSHU • Sacred Heart University • 5151 Park Avenue • Fairfield, CT 06425 • 800.937.6545

COMING THIS FALL



**THE 11TH ANNUAL
 CONNECTICUT
 RENAISSANCE FAIRE**

JOUSTING + ARMORED COMBAT
 KNIGHTS + PRINCESSES + PIRATES
 EXOTIC FOODS + CRAFTS + MORE
 A DAY OF FAMILY FUN IN CT

CTFAIRE.COM

Exceptional Caring...

"The quality of care was exceptional - full of love, dignity, and respect. Thank you from the bottom of our hearts."



- Short-Term Rehabilitation
- Post-operative Care
- Respite Care
- Admission 7 Days a Week
- Rehabilitation Therapy Available Daily
- IV Therapy
- Resident & Family Education

Company founders winners of the CAHCF Lifetime Achievement Award for delivering the highest quality nursing and rehabilitation care.



Aaron Manor
3 South Wig Hill Rd
Chester, CT
(860) 526-5316

Bel-Air Manor
256 New Britain Ave
Newington, CT
(860) 666-5689

Cheshire House
3396 East Main St
Waterbury, CT
(203) 754-2161

Greentree Manor
4 Greentree Drive
Waterford, CT
(860) 442-0647

Lord Chamberlain
7003 Main St
Stratford, CT
(203) 375-5894

Mystic Manor
475 High Street
Mystic, CT
(860) 536-6070



Ryders Health Management
Nursing & Rehabilitation Centers
www.rydershealth.com



Growing takes time.

Don't try to rush it.

When you come in to St. Germain for a Total Financial Advisory, a Certified Financial Planner will review with you your current situation — investments, mortgages, CDs, insurance, assets — and help chart a sensible plan for the future.

Call St. Germain today. We want to help you grow.

ST. GERMAIN
INVESTMENT MANAGEMENT



100 Pearl Street, Hartford, CT 06103 • 860-727-9530
1500 Main Street, Springfield, MA 01115 • 413-733-5111
Toll Free 800-443-7624 • stgermaininvestments.com



**These days, every
street intersects
with Wall Street.**

If the current financial market has you
seeking good direction, call (203) 453-4771
for the peace-of-mind a local bank can provide.



**Financial
Management
& Trust**

at Guilford Savings Bank

gsb-yourbank.com

GUILFORD MAIN • GUILFORD PLAZA • BRANFORD • NORTH BRANFORD • MADISON • NORTH MADISON • OLD SAYBROOK
Estate Planning & Administration • Investment Management • Trustee & Executor Services

NOT A DEPOSIT • NOT FDIC INSURED • NOT INSURED BY ANY FEDERAL GOVERNMENT AGENCY • NOT GUARANTEED BY THE BANK
MAY GO DOWN IN VALUE • SUBJECT TO INVESTMENT RISK • SEEK LEGAL ADVICE REGARDING LEGAL OR TAX MATTERS FROM A QUALIFIED ATTORNEY